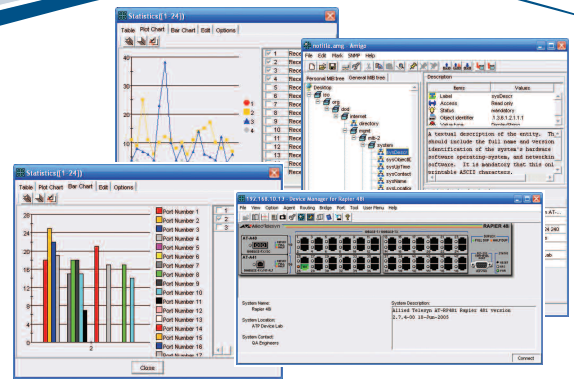


ALLIEDVIEW™-EMS

Network Device Management Software



AlliedView-EMS 4.0.4

Network Device Management Software

Ease of Use

With AlliedView-EMS, you can view details of all the managed Allied Telesis products on your network from a user-friendly, window-based interface. Display the physical view of a device and see color-coded port and module configurations, click on a port to display its communication statistics or even change device settings to improve data flow. All in a matter of minutes, all in an intuitive graphical environment.

Automated Response

With RMON support for Statistics, History, Alarm and Event, it has never been easier to proactively monitor your network. Chart line traffic usage, packet size class, error packet classifications and more to analyze your network's health in real-time and optimize its performance.

Remote Management

To truly manage your network, device monitoring is only half the battle. With AlliedView-EMS, you can configure any supported SNMP Management Information Base (MIB) variable such as full/duplex settings, IP routing, and more.

Flexibility

Java-based AlliedView-EMS has been designed to run in both Unix and Windows environments, either as an add-on to network management solutions for large networks, or as a standalone application for smaller ones.

AlliedView-EMS is a Java-based network device management solution from Allied Telesis. Whether managing a large network distributed across multiple sites, or small networks with only a handful of nodes, AlliedView-EMS provides the tools needed to effectively monitor and proactively manage Allied Telesis' intelligent networking products.

Lower Cost of Ownership

The ultimate value of AlliedView-EMS lies in lowering the Total Cost of Ownership (TCO) of your network. Drive down your network management costs by leveraging the monitoring, analysis and configuration tools. Reduce your downtime costs by identifying problems quickly. Finally, minimize your training costs by taking advantage of AlliedView-EMS' platform independence; interoperability with HP OpenView, Tivoli NetView and SNMPc; and an intuitive, easy-to-understand graphic interface.

Key Features

- Intuitive graphical interface
- Drill-down functionality
- GUI snapshot utility
- RMON 4 group support
- Supports NMS alarms
- Supports SNMP v1, v2c and v3
- VLAN management
- QoS management
- Multi-platform
- HP OpenView, Tivoli NetView and SNMPc interoperability
- Supports Allied Telesis managed devices

Free 45-Day Trial

To receive a free 45-day evaluation copy of AlliedView-EMS, visit www.alliedtelesis.com today.

Gigabit Interface Converters (GBICS)

AT-G8 series
AT-SP series
AT-XP series

Optional Gigabit Expansion Modules (Uplink Modules)

AT-A35LX/SC
AT-A35SX/SC
AT-A39T
AT-A42/GBIC
AT-A46
AT-A47
AT-A60
AT-A61
AT-A62
AT-XEM-125
AT-XEM-12T
AT-XEM-1XP
AT-XEM-2XP
AT-XP9700

Port Interface Cards (PICs)

AT-AR020
AT-AR021S
AT-AR021U
AT-AR022
AT-AR023
AT-AR024
AT-AR026
AT-AR027

Network Service Modules (NSMs)

AT-AR040
AT-AR041
AT-AR042

Optional Fast Ethernet Expansion Modules (Uplink Modules)

AT-A40/MT
AT-A40/SC
AT-A41/MT
AT-A41/SC
AT-A45/MT
AT-A45/SC
AT-A45/SC-SM15

Power Accessories

AT-PBPWRAC
AT-PWR10
AT-PWR11
AT-PWR14
AT-PWR3004
AT-PWR3104
AT-PWR3204
AT-PWR8000
AT-PWR9700
AT-RPS3004
AT-RPS3104
AT-RPS3204
AT-RPS8000
AT-RPS9000
AT-RPS9700

Management Modules

AT-8401 For AT-8400 chassis
AT-CV5M01 For AT-CV5000
AT-CV5M02 For AT-CV1200 and AT-CV5000
AT-MCF2000M For AT-MCF2000
AT-PBM02 For AT-PBC18 chassis
AT-SB4211 For SB4000 series chassis

Stacking Modules

AT-STACK8
AT-STACKM
AT-STACKXG
AT-XEM-STK

Ordering Information

AT-AV-EMSV4-WINDOWS
AlliedView-EMS v4 for Windows
Order number: 980-000147

AT-AV-EMSV4-HP-UX
AlliedView-EMS v4 for HP-UX
Order number: 980-000148

AT-AV-EMSV4-SOLARIS
AlliedView-EMS v4 for Solaris
Order number: 980-000149

USA Headquarters | 19800 North Creek Parkway | Suite 100 | Bothell | WA 98011 | USA | T: +1 800 424 4284 | F: +1 425 481 3895

European Headquarters | Via Motta 24 | 6830 Chiasso | Switzerland | T: +41 91 69769.00 | F: +41 91 69769.11

Asia-Pacific Headquarters | 11 Tai Seng Link | Singapore | 534182 | T: +65 6383 3832 | F: +65 6383 3830

www.alliedtelesis.com

© 2011 Allied Telesis Inc. All rights reserved. Information in this document is subject to change without notice. All company names, logos, and product designs that are trademarks or registered trademarks are the property of their respective owners.

617-00552 Rev. U