

AlliedView™-EMS 3.10
(Full Installation)
MIB COMPILER USER'S GUIDE

TABLE OF CONTENTS

- I OVERVIEW..... 3**
- 2 STARTING THE MIB COMPILER..... 4**
- 3 BASIC OPERATIONS 5**
 - 3.1 MAIN WINDOW6**
 - 3.2 COMPILING MIB FILES7**
 - 3.3 MENUS 11**
 - 3.3.1 File..... 11**
 - 3.3.2 Config..... 11**
 - 3.3.3 Control..... 12**
 - 3.3.4 Help..... 13**

I Overview

The **MIB Compiler** is a utility that enables you to compile **MIB** files using a graphical user interface (**GUI**). With the **MIB Compiler**, you can compile both standard and private **MIB** files.

This document discusses the basic operations of the **MIB Compiler**.

- [Starting the MIB Compiler](#)
- [Basic Operations](#)

2 Starting the MIB Compiler

To start the MIB Compiler from the command line, go to the directory where the executable is located and use the following syntax:

```
mibcom
```

Note - In the Windows environment, go to:

Windows NT, Windows 2000, Windows 2003

Start > Programs > AlliedView-EMS > MIB Compiler

Windows XP

Start > All Programs > AlliedView-EMS > MIB Compiler to launch the MIB Compiler.

2 Starting MIB Compiler

3 Basic Operations

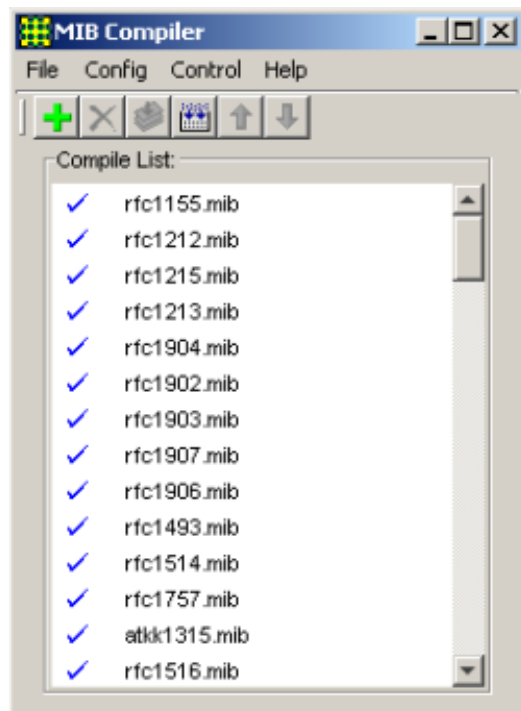
This document discusses the basic features of the MIB Compiler. Information is organized into the following sections:

- [3.1 Main Window](#)
- [3.2 Compiling MIB Files](#)
- [3.3 Menus](#)

3 Basic Operations

3.1 Main Window

When the MIB Compiler is started, the current compile list is displayed in the main window.



MIB Compiler main window

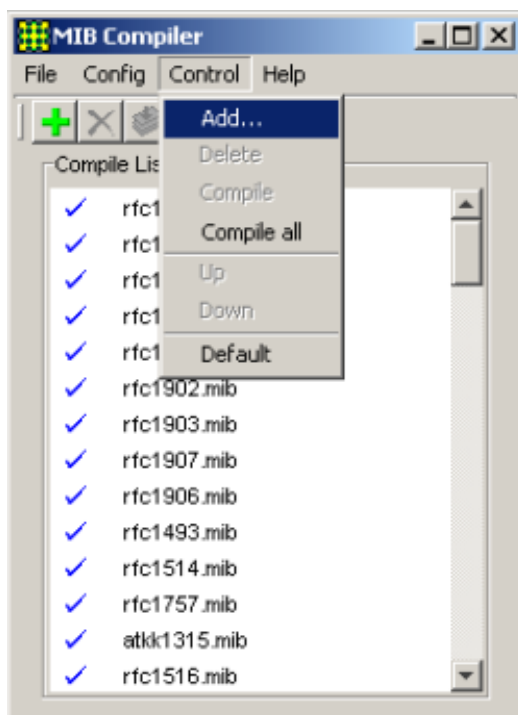
In the compile list, MIB files that have been compiled are indicated with a blue check mark.

3 Basic Operations

3.2 Compiling MIB Files

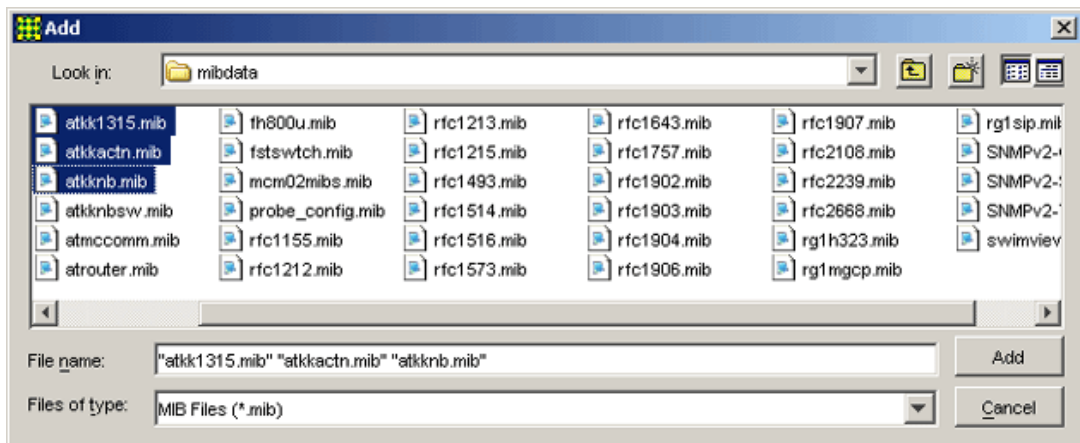
When you open the MIB Compiler, the current compile list is displayed in the main window. You can add new MIB files to the compile list.

1. Click **Control > Add** to open the "Add" dialog box. You can also click the "Add" (+) button on the toolbar to open this dialog box.



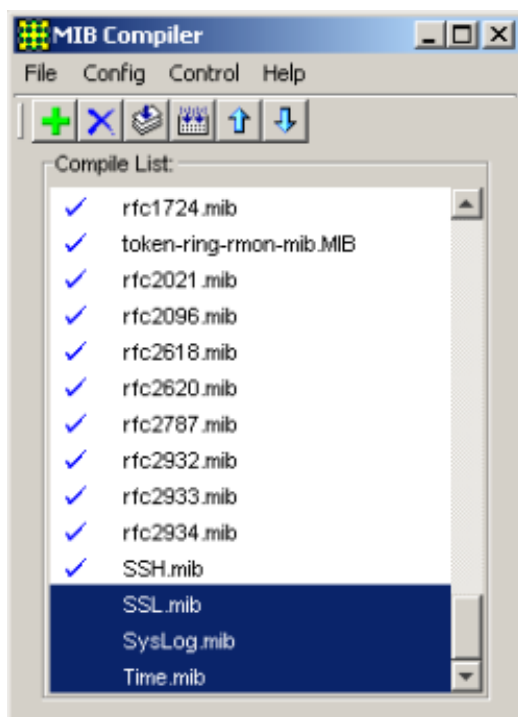
MIB Control Menu

In the "Add" dialog box, select the MIB files that you want to include in the compile list. Use the Shift or Ctrl key to select multiple MIB files and then click Add.



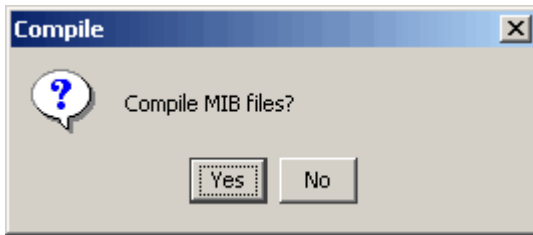
Add MIB files to the compile list

2. Select the file or files that you want to compile. To select multiple files, use the **Shift** or **Ctrl** key. Select **Control > Compile** to start compiling the selected MIB files.



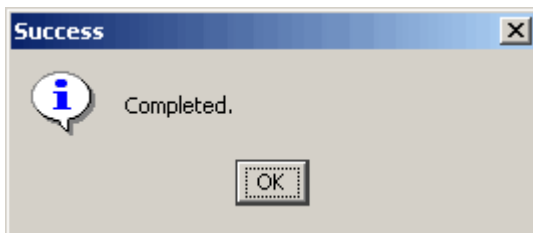
Compile list

A dialog box appears asking you to confirm the compilation. Choose **Yes** to start compiling the MIB files.



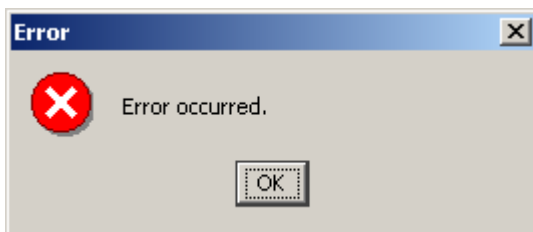
Confirm compilation of MIB files

3. After the compilation, another dialog box appears informing you that the MIB files have been compiled successfully. Click OK.



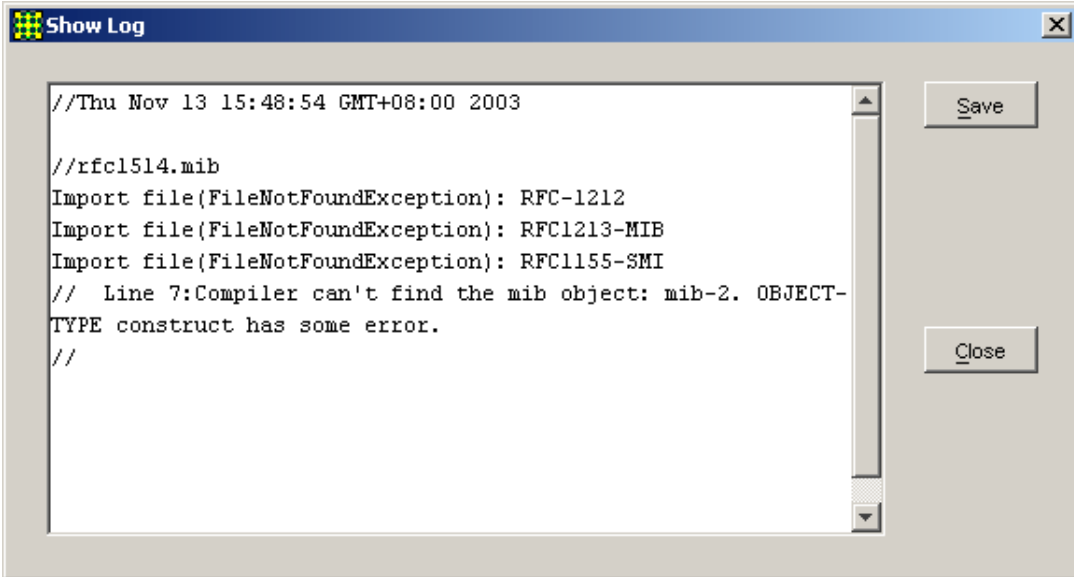
MIB files have been compiled

If errors are encountered during the compilation of the MIB files, an error dialog box appears. Click OK.



Error(s) encountered during compilation

4. Details of the error(s) encountered during compilation are displayed in a Show Log window. To save the error details to a file, click Save. To exit the Show Log window, click Close.



```
//Thu Nov 13 15:48:54 GMT+08:00 2003

//rfc1514.mib
Import file(FileNotFoundException): RFC-1212
Import file(FileNotFoundException): RFC1213-MIB
Import file(FileNotFoundException): RFC1155-SMI
// Line 7:Compiler can't find the mib object: mib-2. OBJECT-
TYPE construct has some error.
//
```

Error log

3 Basic Operations

3.3 Menus

This section discusses the menu structure of the **MIB Compiler**.

- [3.3.1 File](#)
- [3.3.2 Config](#)
- [3.3.3 Control](#)
- [3.3.4 Help](#)

3.3.1 File

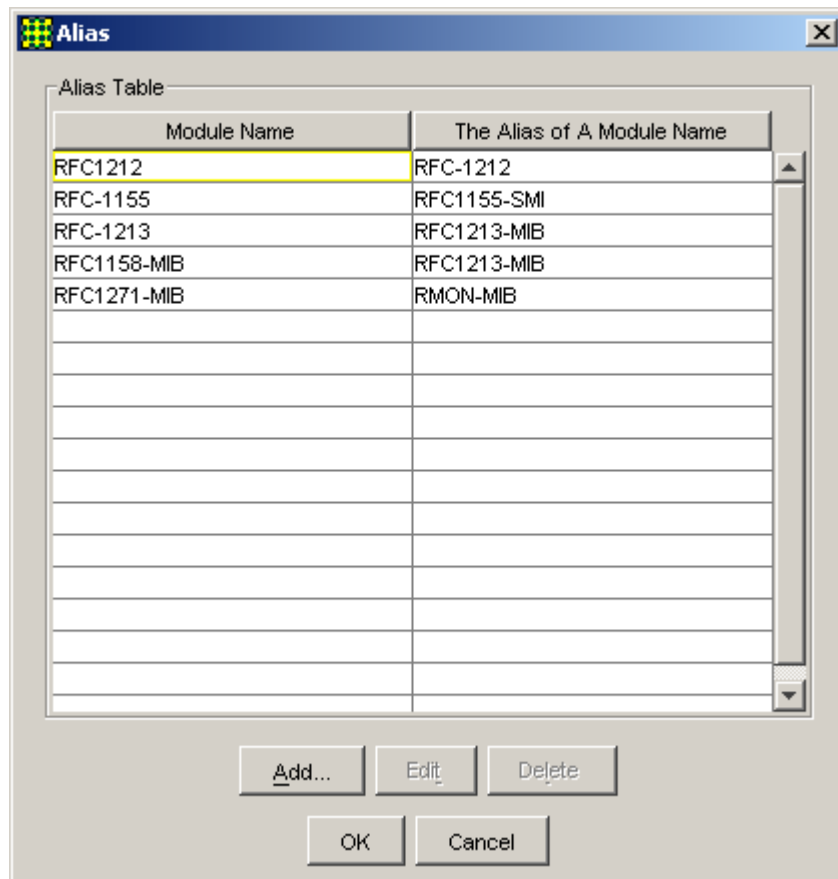
Close

Closes the MIB Compiler.

3.3.2 Config

Alias

Opens the Alias window. In the MIB Compiler, module names are sometimes provided with aliases to prevent errors during compilation of MIB files, particularly private MIB files. Use this window to add a module name and its alias. You can also edit or delete existing module names and aliases.



Alias display

3.3.3 Control

Add

Opens the "Add" dialog box for adding MIB files to the compile list displayed in the main MIB Compiler window.

Delete

Deletes the selected MIB files from the compile list. To select multiple files for deletion, use the Shift or Ctrl key and click on the files that you want to delete.

Compile

Compiles the selected MIB files in the compile list. To select multiple files for compilation, use the Shift or Ctrl key and click on the files that you want to compile.

Compile All

Compiles all MIB files in the compile list, including those that have been compiled previously.

Up

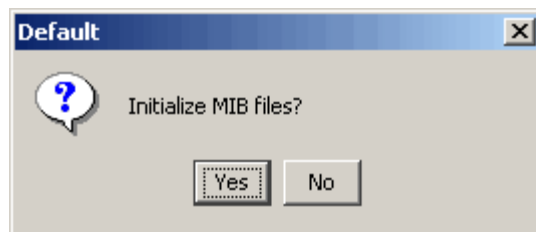
Clicking this option once moves the selected MIB file one place up in the compile list.

Down

Clicking this option once moves the selected MIB file one place down in the compile list.

Default

This option enables you to revert to the original compile list that was included in the MIB Compiler during installation. For example, if you have added new MIB files to the compile list and you encountered errors during compilation, you can reload the original compile list using the Default option. When you click this option, a dialog box opens asking you if you want to initialize the MIB files. Choose Yes to revert back to the original compile list.



Reload original compile list

Note - Choosing the Default option removes all the MIB files that you added to the original compile list. You will have to add the MIB files to the list again if you want to include them in the compilation.

3.3.4 Help

About

Displays version and copyright information for the MIB Compiler.

© 1998-2008 Allied Telesis K. K.

All rights reserved. No part of this publication may be reproduced without prior written permission from Allied Telesis, K. K.

Microsoft is a registered trademark of Microsoft Corporation. Netscape Navigator is a registered trademark of Netscape Communications Corporation. All other product names, company names, logos or other designations mentioned herein are trademarks or registered trademarks of their respective owners.

Allied Telesis K. K. reserves the right to make changes in specifications and other information contained in this document without prior written notice. The information provided herein is subject to change without notice. In no event shall Allied Telesis K. K. be liable for any incidental, special, indirect, or consequential damages whatsoever, including but not limited to lost profits, arising out of or related to this manual or the information contained herein, even if Allied Telesis K. K. has been advised of, known, or should have known, the possibility of such damages.

613-000200 Rev E

USA Headquarters | 19800 North Creek Parkway | Suite 200 | Bothell | WA 98011 | USA | T: +1 800 424 4284 | F: +1 425 481 3895
European Headquarters | Via Motta 24 | 6830 Chiasso | Switzerland | T: +41 91 69769.00 | F: +41 91 69769.11
Asia-Pacific Headquarters | 11 Tai Seng Link | Singapore | 534182 | T: +65 6383 3832 | F: +65 6383 3830
www.alliedtelesis.com
