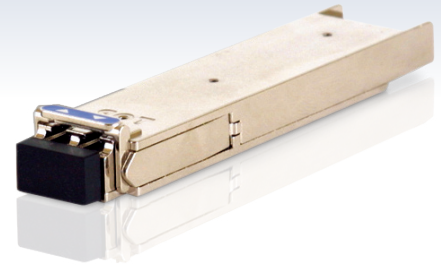


AT-XPLR

10GIGABIT SMALL FORM-FACTOR PLUGGABLE

The AT-XP series offers the latest industry standard 10Gigabit Ethernet connectivity in a flexible, small form-factor. These hot swappable optical interfaces simply plug into an XFP slot in any compatible Allied Telesis product for simple migration to 10Gbps data rates.



Options

The AT-XP series offers both short-haul and long-haul solutions. The hot swappable feature of the AT-XP series allows for network changes without necessarily having to remove or reconfigure costly 10GbE network equipment. Simply change the XFP to meet the new transport demands.

Product Compatibility

The AT-XP series of XFPs are compatible with all the Allied Telesis range of products that support XFP uplink connections.

Key Features

- » 10 Gbps data rate
- » Single-mode solutions
- » Compact size
- » Flexible architecture
- » Hot swappable

MODEL	MEDIA TYPE	WAVELENGTH	TRANSMIT	
			MAXIMUM DATA RATE	DISTANCE
AT-XPLR	SMF	1310 nm	10.3Gbps	10 km

Ordering Information

AT-XPLR
1310nm medium-haul (10km with SMF)

Specifications

Environmental

Operating temperature: -5°C to 70°C (23°F to 158°F)
Operating humidity: 5 to 85% non-condensing
Storage temperature: -40°C to 85°C (-40°F to 185°F)
Storage humidity: 5 to 90% non-condensing

Power Consumption

Power consumption: <2.5W

Optical Characteristics

Parameter	Min.	Typ	Max.	Unit
Transmit	-8.2		0.5	dBm
Receive sensitivity			-12.6	dBm
Overload (saturation)		0.5		dBm
Link power budget		4.4		dBm

Digital diagnostics: Yes

Fiber connectors: LC