

AT-AR236E

ADSL Ethernet & USB Router

Easy Start

Version 1.0

Contents

Introduction	2
Minimum System Requirements	2
ADSL Router Package	3
ADSL Router Overview	3
Step 1: Connecting the ADSL Router to Your Computer/Notebook.....	6
Step 2: Configuring Your Ethernet Network Card / Installing Your USB Device	10
Step 3: Configuring Your Internet Browser	18
Step 4: Connecting to the Internet	19

- Product warranty does not apply to damage caused by lightning, power surges or wrong voltage usage.
- This product is for use only in UL Listed computers.

Introduction

Thank you on your purchase of the Allied Telesyn AT-AR236E ADSL Ethernet & USB Router! The ADSL Router provides you with a high-speed broadband Internet connection using your existing phone line that at the same time allows you to make phone calls.

The ADSL Ethernet & USB Router can be connected to any computer/notebook with a USB Port or 10/100 Base-T Ethernet card. For multiple users connection, you may connect your computers/notebooks to both the Ethernet Port and USB Port on the ADSL Router at the same time or expand the Ethernet connection of the ADSL Router with an Ethernet Hub / Switch.

This documentation assumes that you have already installed an Ethernet card on your computer/notebook.

Minimum System Requirements

- Pentium® MMX 233MHz
- A CD-ROM Drive
- Ethernet card installed with TCP/IP Protocol (required only if you are connecting to the ETHERNET port of your DSL Router)
- USB Port (required only if you are connecting to the USB Port of your ADSL Router)
- Host Operating Systems support for USB:
 - Windows® 98 Second Edition
 - Windows® 2000
 - Windows® Me
 - Windows® XP
- OS independent for Ethernet
- Web Browser support:
 - Microsoft Internet Explorer 4.0 (or later versions)
 - Netscape® Navigator 3.02 (or later versions)

ADSL Router Package

For any missing items, please contact your dealer immediately.

1. ADSL Ethernet & USB Router



2. Installation CD



3. Easy Start



4. USB cable



5. Telephone cable (RJ-11)¹



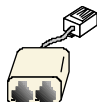
6. Power adapter (DC 9V)²



7. CAT-5 UTP Straight Ethernet Network cable (RJ-45)



8. POTS-Splitter³ (optional)



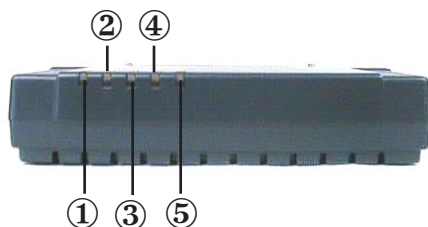
1 The telephone extension cable used for this ADSL Router is a UL Listed Communication Circuit Accessory, minimum 26AWG.

2 This product is intended to be supplied by a UL Listed Direct Plug-In Power Unit marked "Class 2" and rated Input: 120VAC, 50-60Hz, 26W, Output: 9Vdc, 1A Only. Different countries are bundled with different types of power adapter. The above illustration is only a representative.

*3 Depending on your country of purchase, your package may or may not come with a POTS Splitter. The POTS Splitter is required if you are connecting a Telephone Set to the Ethernet Modem. Please refer to **Step 1.2 - Connecting to the ADSL Line** for details. POTS-Splitter can also be purchased from your dealer.*

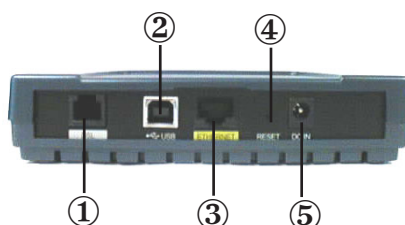
ADSL Router Overview

Front Indicators



- ① **PPP**
Lights up when the PPP connection is established.
- ② **PWR**
Lights up when power is supplied to the Router.
- ③ **DSL**
Lights up when the ADSL connection is established.
Flickers when the ADSL Router is trying to establish a connection with the ADSL Service Provider.
- ④ **ETH/ACT**
Lights up when the Ethernet cable is properly connected from your ADSL Router to the Ethernet Card.
Flickers when the ADSL is transmitting/receiving data.
- ⑤ **USB**
Lights up when the USB device driver is successfully installed in your Computer/ Notebook.

Back Panel



① DSL

Telephone jack (RJ-11) to connect to your Telephone Wall Socket (ADSL line).

② USB

USB port to connect to the USB port on your computer/notebook.

③ ETHERNET

10/100 Base-T Ethernet jack (RJ-45) to connect to your Ethernet Network card or Ethernet Hub / Switch

④ RESET

To reset your ADSL Router to factory default settings. (All customised settings that you have saved will be lost!)

Please refer to the below footer³ on how to activate the reset function.

⑤ DC IN

To connect to the Power Adapter that comes with your package.

3 To activate the reset function:

- Ensure that your ADSL Router is powered on.
- Use a paper clip or a pencil tip to depress the reset button and release. At this point, the **DSL** indicator light will go off, followed by the **USB** and **ETHERNET** indicators. The reset is in progress.
- When the **DSL** indicator starts blinking, it means that the reset process is completed. The default settings are now restored.
- ADSL line is established once the **DSL** indicator lights up.

Step 1: Connecting the ADSL Router to Your Computer/Notebook



Power off your Computer/Notebook or/and any connected devices before connecting to the ADSL Router!

To connect to your ADSL Router, you need to have either an **Ethernet Port** or a **USB Port** present on your Computer/Notebook.

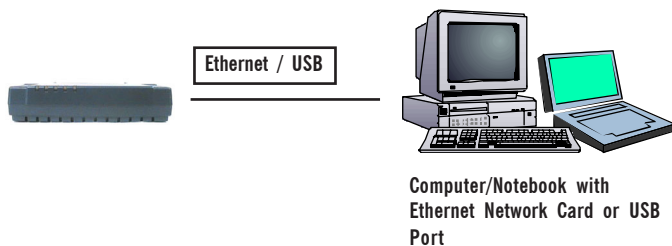
Step 1.1 Connecting to the Ethernet/USB

(See the note on the following page if you are not sure of how the Ethernet and USB Port looks like)

1.1.1 For Single-User Connection

The following shows a typical single-user connection.

Check if your Computer/Notebook has an **Ethernet Port**.



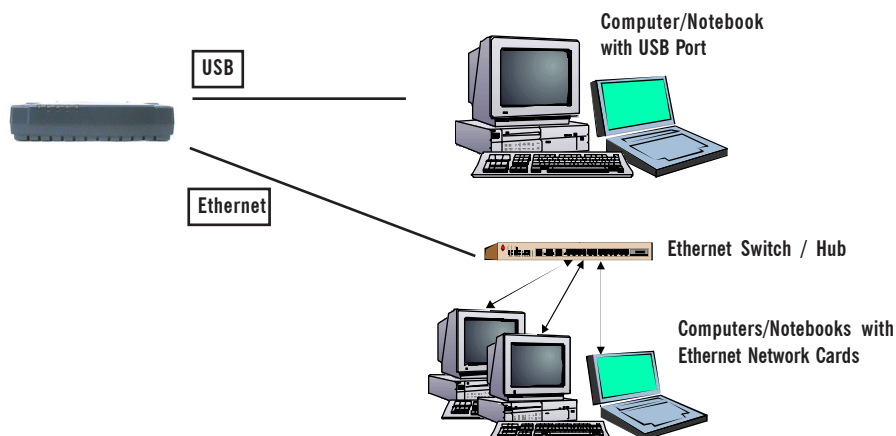
- If an **Ethernet Port** is present, please proceed to [section 1.1.2\(a\) Connecting to the Ethernet](#).
- If an **Ethernet Port** is not present, locate the **USB Port** on your Computer/Notebook and proceed to [section 1.1.2\(b\) Connecting to the USB](#).

1.1.2 For Multiple-Users Connection

You may connect one computer/notebook to the Ethernet Port and another one to the USB Port on the ADSL Router at the same time. Refer to both [section 1.1.2\(a\) Connecting to the Ethernet](#) and [section 1.1.2\(b\) Connecting to the USB](#) for the connections.

For more than 2 Computers/Notebooks connections, you may also expand the Ethernet connection by connecting the ADSL Router to an Ethernet Switch/Hub.

See the following illustration.



For details on the connection and types of Ethernet Network cable to use with the Ethernet Switch/Hub, please refer to the documentation that comes with your Ethernet Switch/Hub.



NOT SURE HOW THE ETHERNET/USB PORT LOOKS LIKE?

The following are some tips to help you locate your Ethernet and USB Ports on your Computer/Notebook. Alternatively, you may refer to the documentation that comes with your Computer/Notebook.

Locating the Ethernet Port on your Computer/Notebook

Most Computers/Notebooks have labels describing the Ports. For Ethernet Port, you will see either **ETHERNET**, **ETH** or **RJ45** labelled near the Port.

If your Computer/Notebook does not have such descriptions, try the following.

- **Picture A** gives the illustration of an Ethernet Port. All Ethernet Ports have **8** conductors on it. Do not mistaken with the LINE Port (Picture B) that has only **6** conductors.
- The Ethernet Port is slightly bigger than the LINE Port.

A. ETHERNET:




B. LINE:



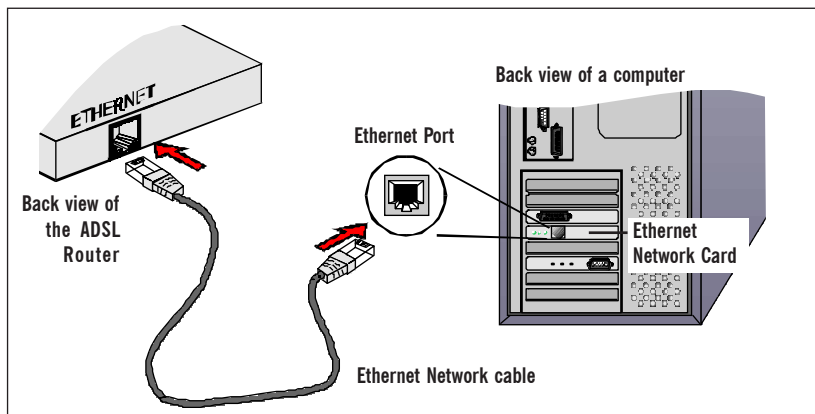
Locating the USB Port on your Computer/Notebook

The USB Port on your Computer/Notebook can often be identified by the label

USB or the icon .

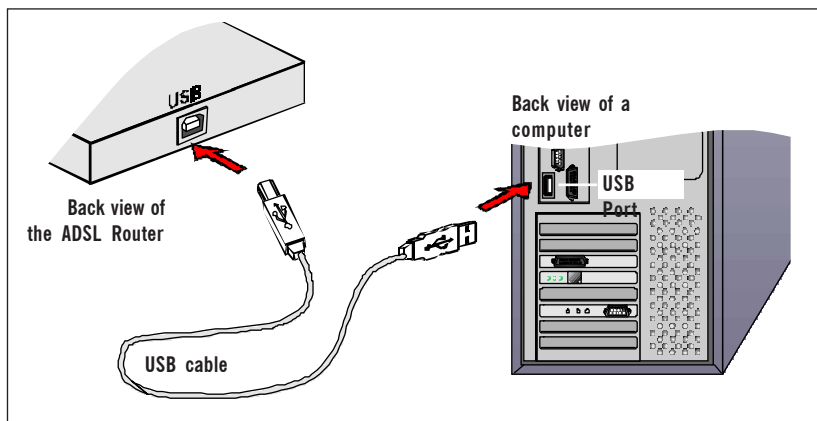
1.1.2(a) Connecting to the Ethernet

(This connection is not required if you are connecting to an Ethernet Switch/Hub for multiple-users connection).



You may now proceed to [Step 1.2](#).

1.1.2(b) Connecting to the USB

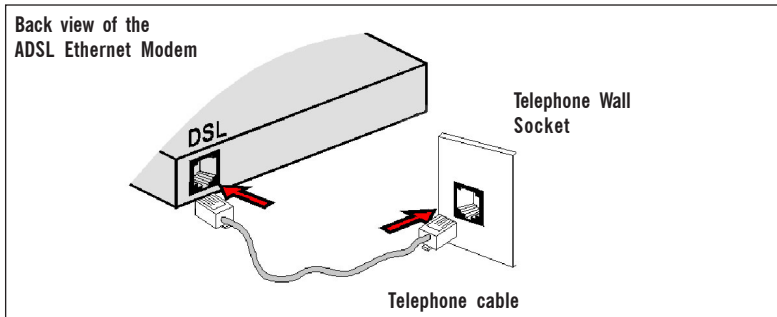


You may now proceed to [Step 1.2](#).

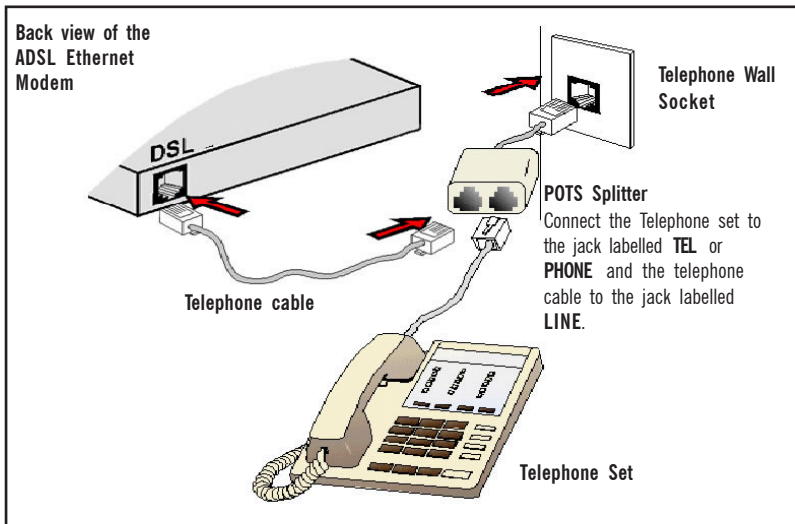
Step 1.2 Connecting to the ADSL Line

To connect the **ADSL Ethernet Modem** to the ADSL line, carried out **Step 1.2(a)**.
To connect the **ADSL Ethernet Modem** to the ADSL line and a **Telephone Set**, carried out **Step 1.2(b)**.

(a) To connect to the ADSL line



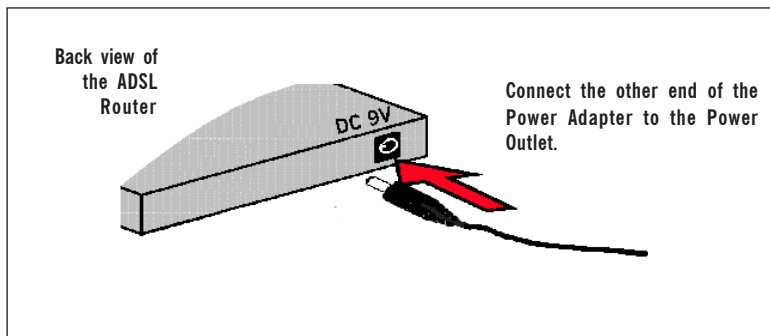
(b) To connect to the ADSL line and Telephone Set



The POTS Splitter(with built-in Microfilter) is a device that allows you to connect both your Telephone cable and Telephone Set to the same Telephone Wall Socket. The device at the same time helps to eliminate background noise on the telephone line, ensuring the best possible phone performance.

Step 1.3 Connecting to the Power Outlet

Connect your ADSL Router to the Power Outlet via the Power adapter (that comes with your ADSL Router package).



Step 1.5 Powering On

- Power on the Power Outlet that is connected to your ADSL Router.
- Power on your Computer(s)/Notebook(s).

Please proceed to [Step 2](#).

Step 2: Configuring Your Ethernet Network Card / Installing Your USB Device



If your computer/notebook is connected to the **Ethernet Port** of the ADSL Router, proceed with [section 2.1](#). If your computer/notebook is connected to the **USB Port** of the ADSL Router, proceed with [section 2.2](#). If your computers/notebooks are connected to both the Ethernet Port and USB Port of your ADSL Router, please proceed with both [sections 2.1](#) and [2.2](#)!

2.1 Configuring Your Ethernet Network Card

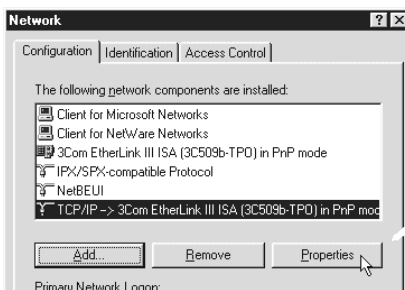


1. Proceed with this section **ONLY** if your computer/notebook is connected to the Ethernet Port of your ADSL Router.
2. The following illustrated screen shots serve only as examples. For any dissimilarities, please follow closely the instructions prompted on your Computer.

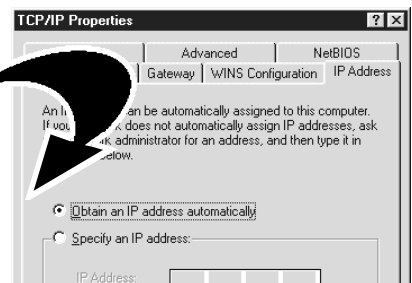
2.1.1 For Windows® 98 Second Edition / Windows® Me

- i From your Windows desktop, right-click on the **Network Neighborhood** icon. Select **Properties**.
- ii From the **Configuration** tab, select **TCP/IP-> xxx** where **xxx** refers to the model of your Ethernet Card that is connected to your ADSL Router.

Click **Properties**.



(This screen shot uses **3Com EtherLink** Ethernet card model as an example).



- iii Click the **IP Address** tab.

Click the option **Obtain an IP address automatically** and click **OK** to save the settings.

Ensure that your ADSL Router is powered on. Restart your system.

Proceed to [Step 3](#).

2.1.2 For Windows® 2000 / Windows® XP

i Windows® 2000:

- From your Windows desktop, right-click on the icon **My Network Places** and select **Properties**.
- At the **Network and Dial-up Connections** window, right-click on the **Local Area Connection** icon and select **Properties**.

Windows® XP:

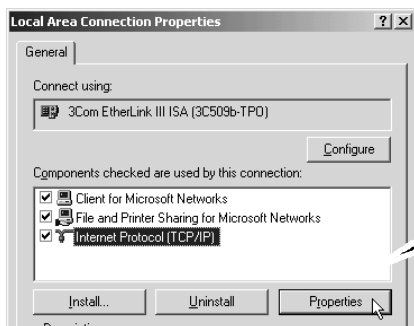
(Instructions are based on default **Start menu** option)

- From your Windows desktop, click **Start > All Programs > Accessories > Communications > Network Connections**.
- Right-click on the **Local Area Connection** icon that reflects **the model of your Ethernet Card that is connected to your ADSL Router** and click **Properties**.

ii Ensure that the field **Connect Using** indicates the model of your Ethernet Card that is connected to your ADSL Router.

(This is important especially if you have more than one **Local Area Connection** icons displayed at the **Network and Dial-up Connections** / **Network Connections** window. Ensure that you have selected the correct one.)

Select **Internet Protocol (TCP/IP)** and click **Properties**.



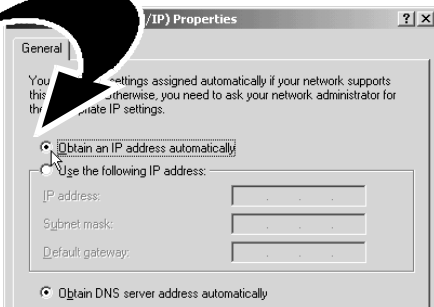
(This screen shot uses **3Com EtherLink** Ethernet card model as an example).

iii Select the option **Obtain an IP address automatically** and click **OK**.

Click **OK** again to close.

Ensure that your ADSL Router is powered on. Restart your system.

Proceed to **Step 3**.



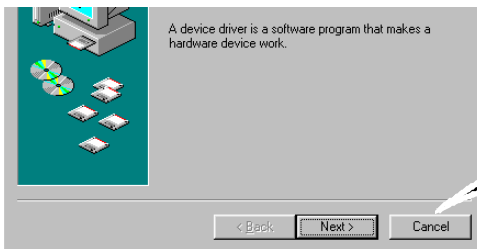
2.2 Installing the USB Device Driver



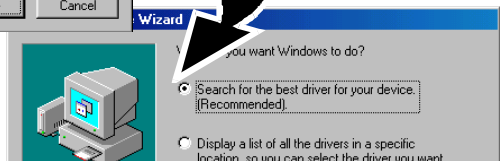
1. Proceed with this section **ONLY** if your computer/notebook is connected to the USB Port of your ADSL Router!
2. The following screen shots illustrated serve only as examples. For any dissimilarities, please follow closely the instructions prompted on your Computer/Notebook.
3. For Windows® 98 Second Edition users, you may be prompted for your Windows CD-ROM. Have it ready by your side.

2.2.1 Installing the USB Device Driver - For Windows® 98 Second Edition

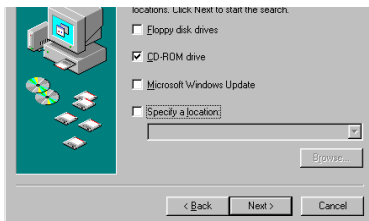
- i Power on your computer to start Windows.
- ii Place the **Installation CD** into your CD-ROM Drive
- iii At the following prompt, and click **Next**.



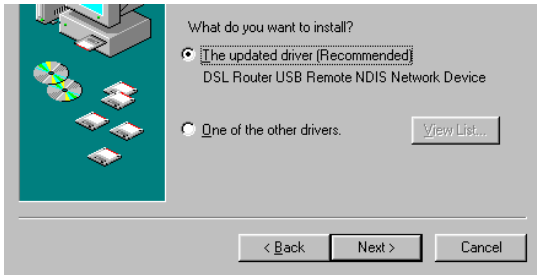
- iv Select **Search for the best driver for your device (Recommended)** option and click **Next**.



- v Click **CD-ROM drives** option and click **Next**.



- vi Select **The updated driver (Recommended) DSL Router USB Remote NDIS Network Device** and click **Next**.



- vii Click **Next** to proceed installation with indicated driver.



Depending on your system configurations, you may be prompted for your Windows CD-ROM during installation. At the prompt, replace the **Installation CD** in your CD-ROM Drive with your **Windows CD-ROM** and click **OK**.

At the **Copying Files** dialog box, enter the path of your Windows CD-ROM and click **OK**.

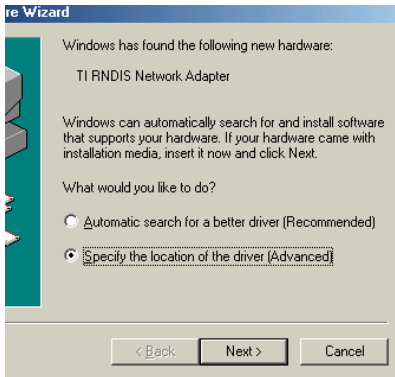
- viii Click **Finish** to complete the USB driver installation.

- ix Restart your system when prompted.

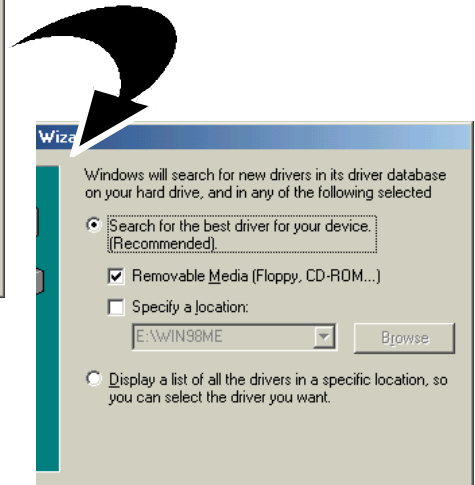
Proceed to **Step 3**.

2.2.2 Installing the USB Device Driver - For Windows® Me

- i Power on your computer to start Windows.
- ii Place the **Installation CD** into your CD-ROM Drive.
- iii At the following prompt, select **Specify the location of the driver (Advanced)** option and click **Next**.



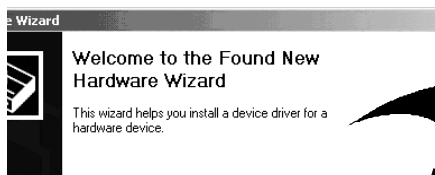
- iv Click **Removable Media** option and click **Next**.



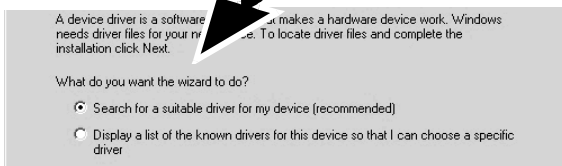
- v Click **Next** again to proceed installation with the indicated driver.
 - vi Click **Finish** to complete the USB driver installation.
 - vii Restart your system when prompted.
- Proceed to **Step 3**.

2.2.3 Installing the USB Device Driver - For Windows® 2000

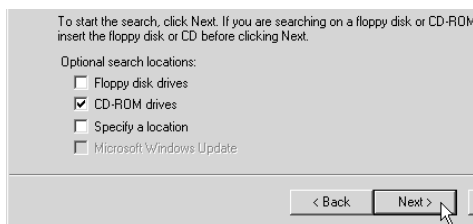
- i Power on your computer to start Windows.
- ii Place the **Installation CD** into your CD-ROM Drive.
- iii At the following prompt, click **Next**.



- iv Select **Search for a suitable driver for my device (recommended)** option and click **Next**.

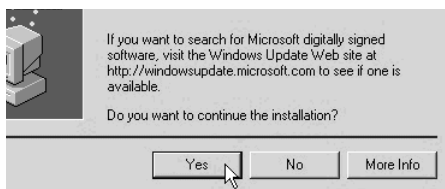


- v Click **CD-ROM drives** option and click **Next**.



- vi At the next prompt, click **Next** to proceed installation with the indicated driver.
- vii You may be prompted with **Digital Signature Not Found** dialog box during installation. (This happens when Windows detects your driver as a new version).

Click **Yes** to proceed with the installation.



- viii Click **Finish** when prompted.

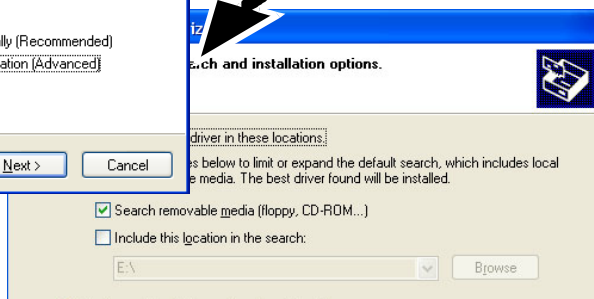
Upon completion, proceed to **Step 3**.

2.2.4 Installing the USB Device Driver - For Windows® XP

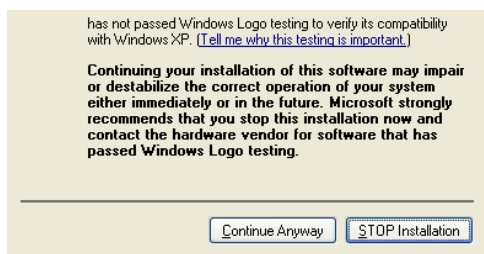
- i Power on your computer to start Windows.
- ii Place the **Installation CD** into your CD-ROM Drive.
- iii At the following prompt, select **Install from a list or specific location (Advanced)** option and click **Next**.



- iv Click **Search removable media** option and click **Next**.




- v You may be prompted with **Hardware Installation** dialog box. (This happens when Windows detects your driver as a new version).
Click **Continue Anyway** to proceed with the installation.



- vi Click **Finish** when prompted.
Upon completion, proceed to **Step 3**.


Step 3: Configuring Your Internet Browser

3.1 Microsoft® Internet Explorer™ (based on IE 5.5)

- i From your Windows desktop, double-click on your Internet Explorer icon  to launch your Browser.
- ii From the Menu, click **Tools** and select **Internet Options...**
- iii Select the **Connection** tab. Click the field, '**Never dial a connection**'. (This option will be grayed off if you have not installed an analog modem on your computer/notebook before. Proceed with **3.1 iv**).
- iv Click the **LAN Settings...** button. Ensure that your **Proxy Server** is not enabled.
- v Click **OK** to close the dialog box.

You may now proceed to **Step 4** to establish your Internet connection.

3.2 Netscape® Navigator

- i From your Windows desktop, double-click on your Navigator icon  to launch your Browser.
- ii Depending on your Netscape versions, carry out one of the following instructions:
Click **Options > Network Preferences**.
Select **Proxies**. Ensure that the **No Proxies** option is selected.
OR
Click **Edit > Preferences**.
Select **Advanced** and click **Proxies**. Ensure that the option **Direct Connection to the Internet** is enabled.
- iii Click **OK** for changes to take effect.

You may now proceed to **Step 4** to establish your Internet connection.

Step 4: Connecting to the Internet

- i From your Internet Browser, key in **http://192.168.1.1** at the address bar and hit **<Enter>**.
- ii You will be prompted for the **username** and **password** to login to the Web Management. Enter **admin** for the username and **password** for the Password (factory defaults). Click **OK**.
(Note that this username and password is not the same as the username and password given by your ADSL Service Provider to connect to the Internet).
- iii Click **Quick Start** and then follow by **Easy Login**.
- iv Enter the relevant information given by your ADSL Service Provider and click **Apply**.
- v You are now connected to the Internet.