

AT-AR256E 4-Port ADSL Router

Quick Installation Guide

Version 1.0

Contents

| | |
|---|----|
| Introduction | 2 |
| Minimum System Requirements | 2 |
| Package Contents | 2 |
| ADSL Router Overview | 3 |
| Typical ADSL Router Connections | 5 |
| Step 1: Connecting the ADSL Router to Your Computer | 6 |
| Step 2: Configuring Your Ethernet Network Card | 9 |
| Step 3: Configuring Your Web Browser | 11 |
| Step 4: Connecting To the Internet | 12 |

Product warranty does not apply to damage caused by lightning, power surges or wrong usage of voltage.

Introduction

Thank you for purchasing the AT-AR256E 4-Port ADSL Router! The AT-AR256E allows you to share your ADSL connection with multiple computers using just a single device. With ADSL services, you can enjoy high speed broadband connection to the Internet, online gaming and corporate network while making phone calls using your existing telephone line.

The AT-AR256E can be connected to any computer with a Ethernet network card installed. For multi-user sharing, you can connect your computers to the integral 4-port switch of the ADSL router or expand your network with a Ethernet hub or switch. The auto MDI/MDI-X feature automatically senses straight and crossover cables. You can plug any type of network cable in without worrying about connectivity problems like in the past with older switches.

This document assumes that you have already installed a Ethernet network card on your computer.

Minimum System Requirements

- Intel Pentium® MMX 233MHz
- Ethernet network card with TCP/IP stack installed
- OS independent (support for Microsoft Windows® only)
- Microsoft® Internet Explorer™ 4.0 or Netscape® Navigator 3.02 installed

Package Contents

For any missing items, please contact your dealer immediately.

ADSL router



Documentation CD



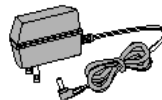
Ethernet cable



Telephone cable

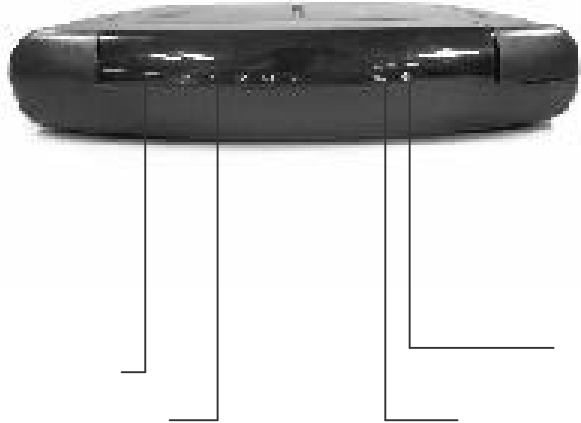


Power adapter



ADSL Router Overview

Front Indicators



POWER

Lights up when power is supplied to the ADSL router.

ETH/ACT

Lights up when the Ethernet cable is properly connected from your Ethernet network card to the ADSL router.

Flickers when the ADSL router is transmitting/receiving data.

DSL

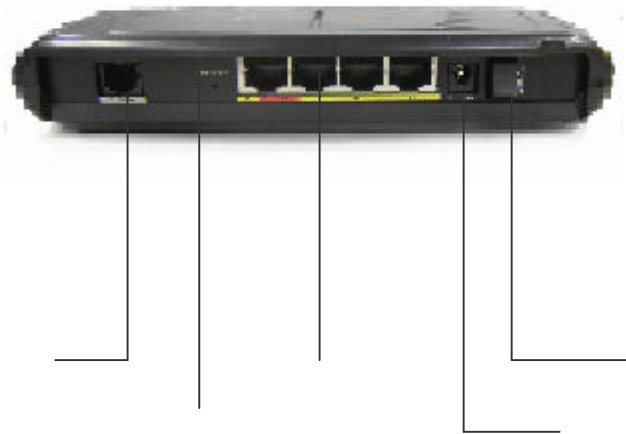
Lights up when the ADSL connection is established.

Flickers when the ADSL router is trying to establish a connection to your ADSL Provider.

INTERNET

Lights up when the PPP connection to your ADSL Provider is established.

Back Panel



POWER SWITCH

To power ON/OFF the ADSL router.

DC 9V

To connect the power adapter that comes with your ADSL router package.

ETHERNET

Integral 4-port switch to connect your Ethernet network card, hub and/or switch.

RESET

To reset your ADSL router to factory default settings. (All customised settings that you have saved will be lost!) Please refer to the footer² below on how to activate the reset function.

DSL

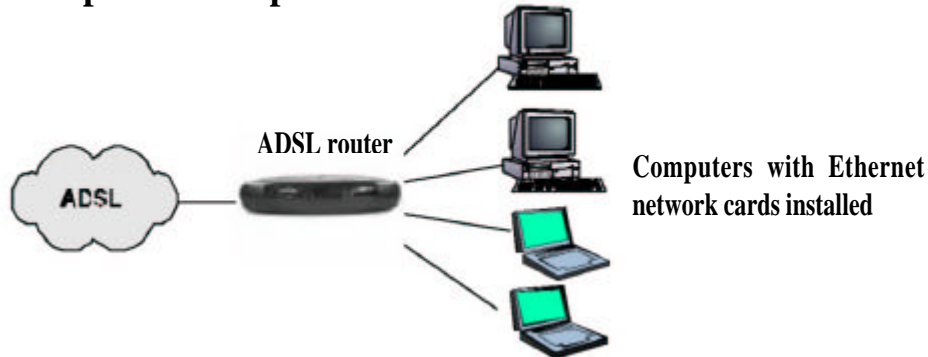
To connect the telephone cable that comes with your ADSL router package.

²To activate the reset function:

- Ensure that your ADSL router is powered ON.
- Use a paper clip or pencil tip to depress the reset button and release. At this point, the DSL indicator light will go OFF, followed by the Ethernet indicators. The reset is in progress.
- When the DSL indicator starts blinking, it means that the reset process is completed. The default settings are now restored.
- The ADSL connection is established once the DSL indicator stops blinking.

Typical ADSL Router Connections

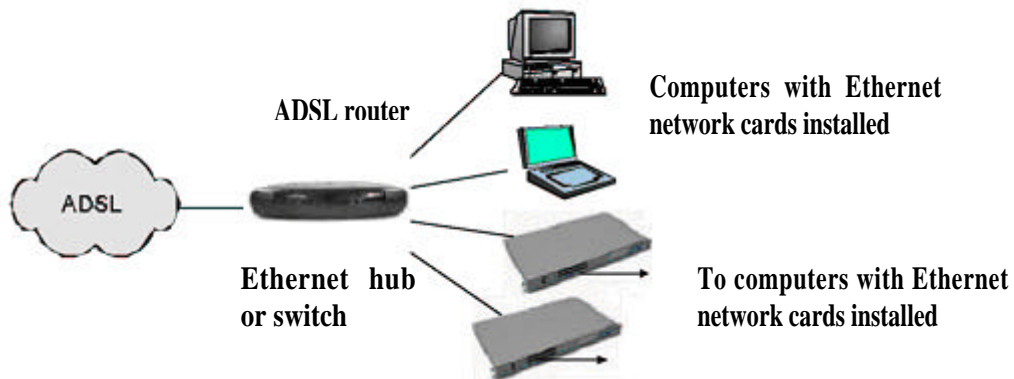
For Up To 4 Computers



The auto MDI/MDI-X feature automatically senses straight and crossover cables.

For More Than 4 Computers

To connect more than 4 computers, you can uplink to an Ethernet hub or switch. For details on how to connect your Ethernet hub or switch, please refer to the documentation that comes with the Ethernet hub or switch.



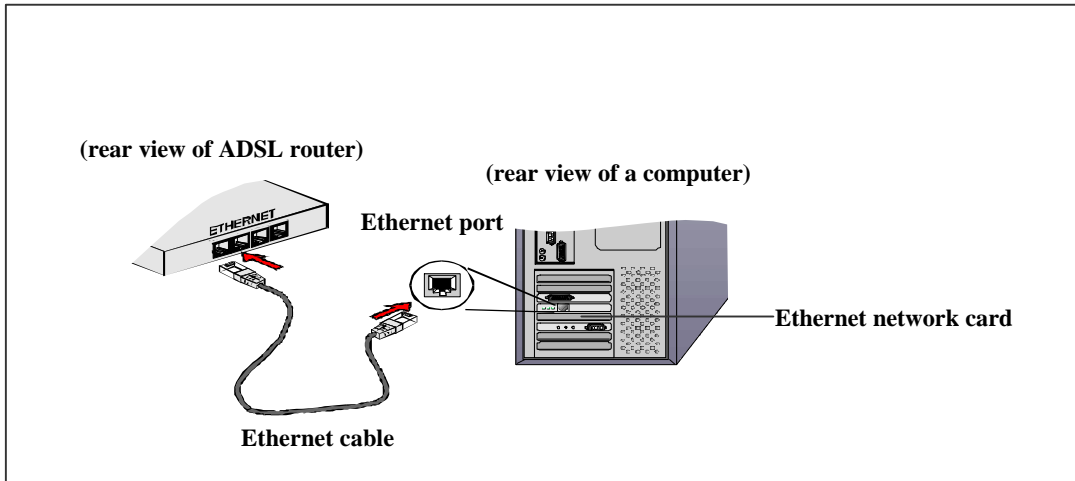
The auto MDI/MDI-X feature automatically senses straight and crossover cables.

Step 1: Connecting the ADSL Router to Your Computer

! Power OFF your computer and any other connected devices before connecting to the ADSL Router!

1.1 Connecting To the Ethernet

Connect your computer to the ADSL router as illustrated below. The following illustration shows the connection of a single computer.



(All the Ethernet ports on the ADSL router are auto MDI/MDI-X. Both straight and crossover Ethernet cables can be used)



Not Sure How The Ethernet Port Looks Like?

The following are some tips to help you locate the Ethernet port on your computer. Alternatively, you may refer to the documentation that comes with your computer.

Locating the Ethernet Port on Your Computer

Most computers have labels describing the ports. For Ethernet port, you will see **ETHERNET**, **ETH** or **RJ-45** labeled near the port. If your computer does not have such descriptions, try the following:

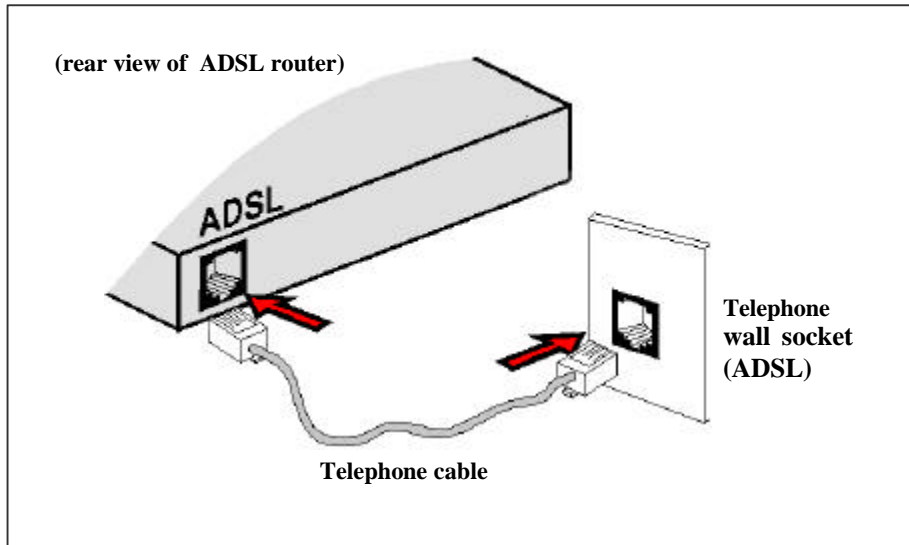
- **Picture A** gives the illustration of a Ethernet port. All Ethernet ports have **8** conductors on it. Do not be mistaken with the LINE port (**Picture B**) that has only **6** conductors.
- The Ethernet port is slightly bigger than the LINE port.



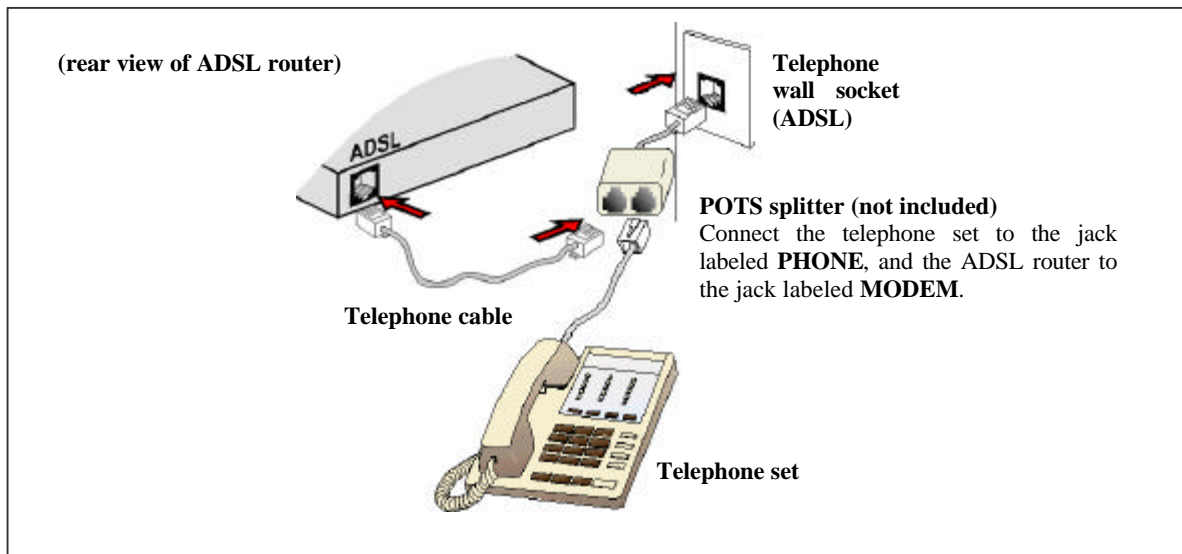
1.2 Connecting To the Telephone Wall Socket (ADSL)

To connect the ADSL router to the telephone wall socket, carry out **Step 1.2(a)**. To connect the ADSL router to the telephone wall socket and a telephone set, carry out **Step 1.2(b)**.

(a) To Connect To the Telephone Wall Socket (ADSL)



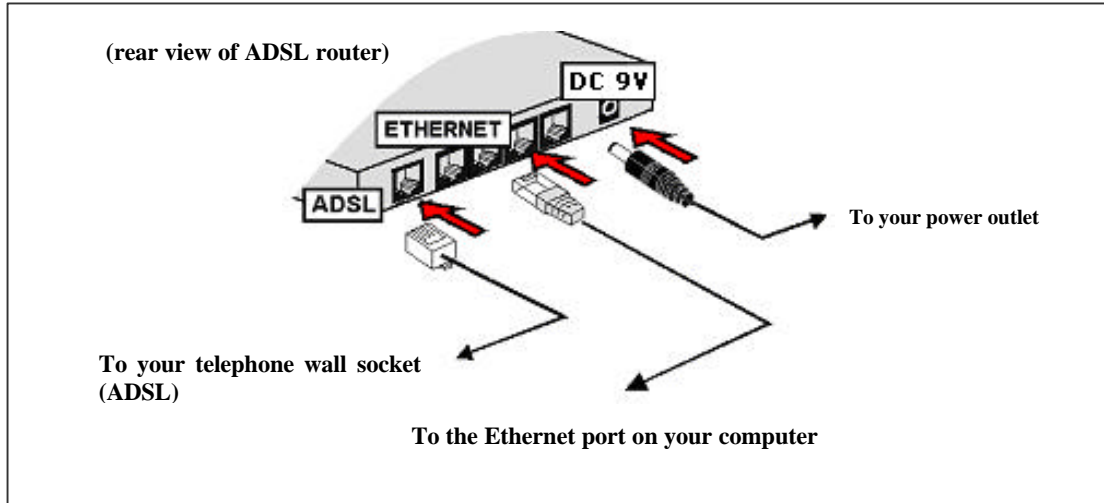
(b) To Connect To the ADSL and Telephone Set



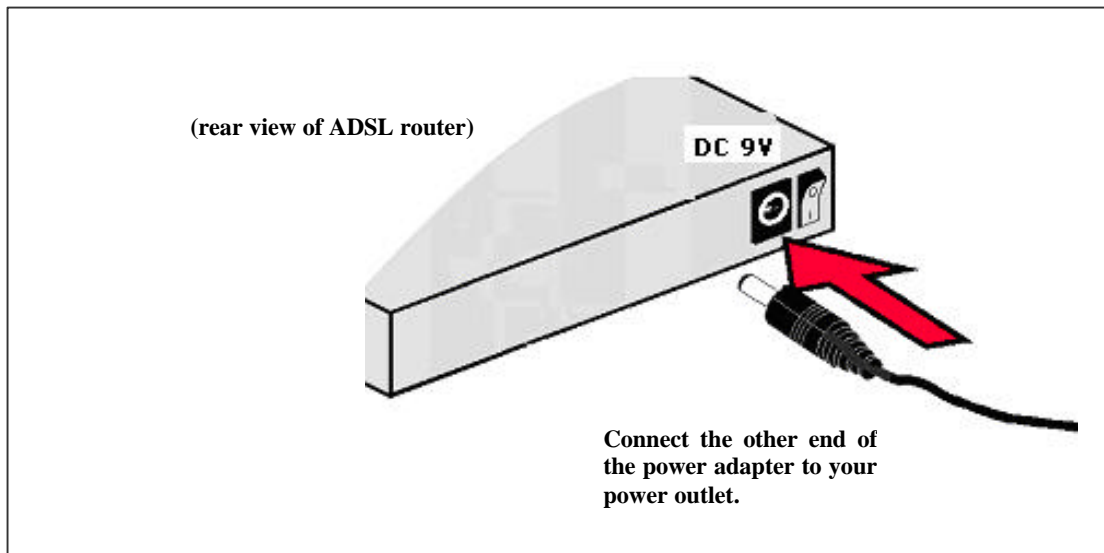
The POTS splitter is a device that allows you to connect both the ADSL router and your telephone set to the same telephone wall socket. The device at the same time helps eliminate background noise on the telephone line, ensuring the best possible voice quality.

1.3 Checking Your Connections

Please check your connections before proceeding.



1.4 Connecting To the Power Outlet



1.5 Powering On

- I. Switch ON your power outlet that is connected to the ADSL router.
- II. Power ON the ADSL router.
- III. Turn ON your computer.

Please proceed to **Step 2**.

Step 2: Configuring Your Ethernet Network Card

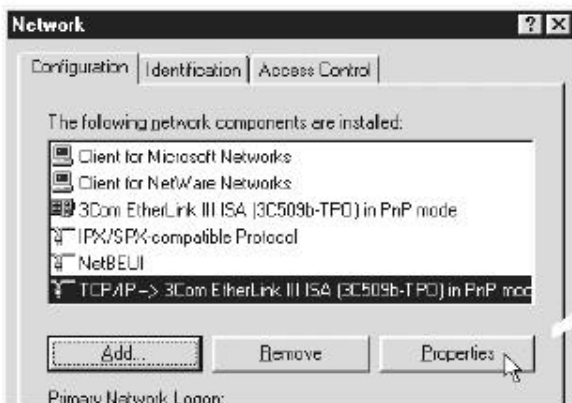


The following illustrated screen shots serve only as examples. For any dissimilarities, please follow closely to the instructions prompted on your screen.

2.1 For Microsoft Windows® 98 Second Edition / Me

- I. From your Windows Desktop, right-click on the **Network Neighborhood** icon. Select **Properties**.

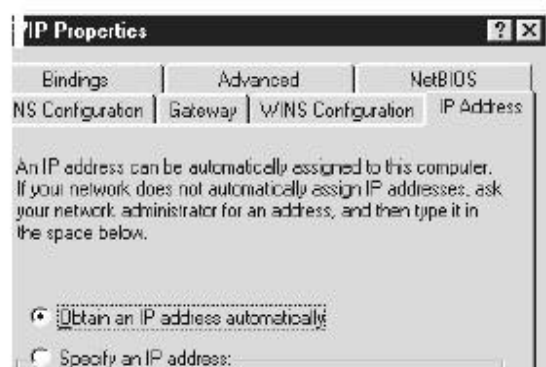
- II. From the **Configuration** tab, select **TCP/IP-> xxx** (where **xxx** refers to the model of your Ethernet network card that is connected to the ADSL router). Click **Properties**.



(This screen shot uses **3Com EtherLink** Ethernet network card model as an example).



- III. Click the **IP Address** tab. Select the option **Obtain an IP address automatically**, and click **OK** to save the settings.



Ensure that the ADSL router is powered ON.
Restart your system. Proceed to **Step 3**.

2.2 For Microsoft Windows® 2000 / XP

I. Windows® 2000:

- a) From your Windows Desktop, right-click on the icon **My Network Places** and select **Properties**.
- b) At the **Network and Dial-up Connections** window, right-click on the **Local Area Connection** icon and select **Properties**.

Windows® XP:

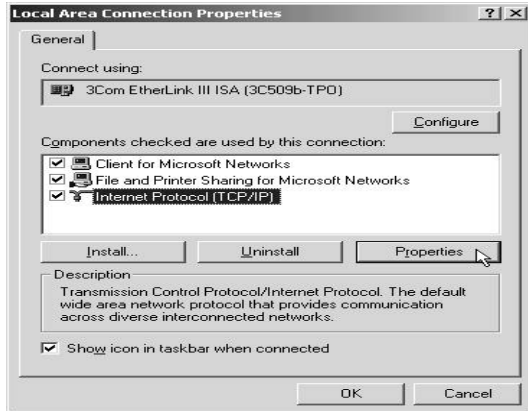
(Instructions are based on default **Start menu** option)

- a) From your Windows Desktop, click **Start > All Programs > Accessories > Communications > Network Connections**.
- b) Right-click on the **Local Area Connection** icon that reflects the model of your Ethernet network card that is connected to the ADSL router, and click **Properties**.

II. Ensure that the field **Connect using** indicates the model of your Ethernet network card that is connected to the ADSL router.

(This is important especially if you have more than one **Local Area Connection** icons displayed at the **Network and Dial-up Connections / Network Connections** window. Ensure that you have selected the correct one.)

Select **Internet Protocol (TCP/IP)** and click **Properties**.



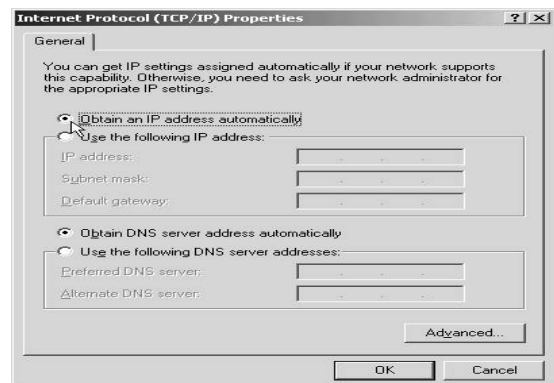
(This screen shot uses **3Com EtherLink** Ethernet network card model as an example).



III. Select the option **Obtain an IP address automatically** and click **OK**.


Click **OK** again to close.

Ensure that the ADSL router is powered ON. Restart your system. Proceed to Step 3.




Step 3: Configuring Your Web Browser

3.1 Microsoft® Internet Explorer™ (based on IE 5.5)

- I. From your Windows Desktop, double-click on the Internet Explorer icon  to launch your web browser.
- II. From the menu, click **Tools** then select **Internet Options**.
- III. Click the **Connections** tab. Select the field, '**Never dial a connection**'. (This option will be grayed out if you have not installed an analog modem on your computer before. Proceed to **3.1 IV**)
- IV. Click on the **LAN Settings...** button. Ensure that the **Proxy server** is not enabled.
- V. Click **OK** to close the dialog box.

You may now proceed to **Step 4** to establish your Internet connection.

3.2 Netscape® Navigator

- I. From your Windows Desktop, double-click on the Navigator icon  to launch your web browser.
- II. Depending on your Netscape version, carry out one of the following instructions:

Click **Options > Network Preferences**.
Select **Proxies**. Ensure that the **No Proxies** option is selected.

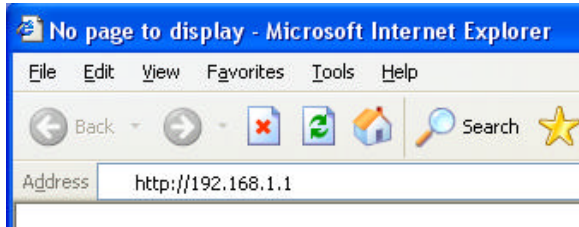
OR

Click **Edit > Preferences**.
Select **Advanced** and click **Proxies**. Ensure that the option **Direct Connection to the Internet** is enabled.
- III. Click **OK** for the changes to take effect.

You may now proceed to **Step 4** to establish your Internet connection.

Step 4: Connecting To the Internet

- I. From your web browser, key in **http://192.168.1.1** at the address bar and hit **<Enter>**.



- II. You will be prompted for the username and password to login to the web management application of the ADSL router. Enter **admin** for the **Username** and **admin** for the **Password** (factory defaults). Please note that the username and password are case-sensitive and must be entered exactly as shown.

| Modem Access | |
|--|--|
| Modem authentication is required. This is different from your ISP username/password. | |
| Username: | <input type="text" value="admin"/> |
| Password: | <input type="password" value="•••••"/> |
| <input type="button" value="Log In"/> | |

- III. Click **Log In**.
Note: This username and password are not the same as the username and password given by your ADSL Provider to connect to the Internet.
- IV. The web management **Quick Start** page will be displayed. If the **Login Settings** menu does not automatically appear, on the left hand menu, select **Quick Start** from the menu buttons at the top of the user interface.
- V. Enter the username and password along with the network settings provided to you by your ADSL Provider into the **Login Settings** and click **Connect**.
- VI. You will be automatically connected to the Internet. Upon successful connection, the following screen will appear showing the connection status of the ADSL router.

| Connections (1) | | | | | | |
|--------------------|-------------|---------------|------------------|----------------------|--------------------------|---|
| <u>Description</u> | <u>Type</u> | <u>IP</u> | <u>State</u> | <u>Online</u> | <u>Disconnect Reason</u> | |
| quick_start | pppoe | 220.255.68.44 | Connected | 0hr 0min 22sec | N/A | <input type="button" value="Disconnect"/> |
| | | | | | | <input type="button" value="Refresh"/> |