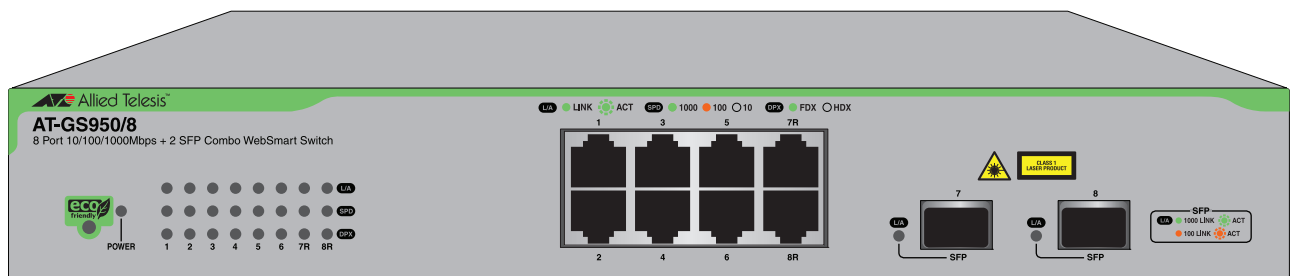


## AT-GS950/8

Gigabit Ethernet Smart Switch



# How to Start a WEB Management Session

Copyright © 2011 Allied Telesis, Inc.

All rights reserved. No part of this publication may be reproduced without prior written permission from Allied Telesis, Inc.

Allied Telesis and the Allied Telesis logo are trademarks of Allied Telesis, Incorporated. All other product names, company names, logos or other designations mentioned herein are trademarks or registered trademarks of their respective owners.

Allied Telesis, Inc. reserves the right to make changes in specifications and other information contained in this document without prior written notice. The information provided herein is subject to change without notice. In no event shall Allied Telesis, Inc. be liable for any incidental, special, indirect, or consequential damages whatsoever, including but not limited to lost profits, arising out of or related to this manual or the information contained herein, even if Allied Telesis, Inc. has been advised of, known, or should have known, the possibility of such damages.

# How to Start an AT-GS950/8 WEB Management Session

---

This document contains the procedures to start you Web management session on the AT-GS950/8 switch. The following topics are discussed:

- ❑ “Establishing a Remote Connection to the Web Browser Interface” on page 4
- ❑ “Web Browser Tools” on page 8
- ❑ “Configuration of IP Address, Subnet Mask and Gateway Address” on page 9
- ❑ “IP Access List Configuration” on page 11
- ❑ “DHCP Client Configuration” on page 18
- ❑ “System Management Information” on page 21
- ❑ “User Name and Password Configuration” on page 23
- ❑ “User Interface Configuration” on page 26
- ❑ “System Information Display” on page 28
- ❑ “Pinging a Remote System” on page 37
- ❑ “Pinging a Remote System” on page 37
- ❑ “Returning the AT-S107 Management Software to the Factory Default Values” on page 43
- ❑ “Quitting a Web Browser Management Session” on page 44

---

## **Note**

To permanently save your new settings or any changes to the configuration file, select **Save Configuration to Flash** from the main menu on the left side of the page.

---

## Establishing a Remote Connection to the Web Browser Interface

---

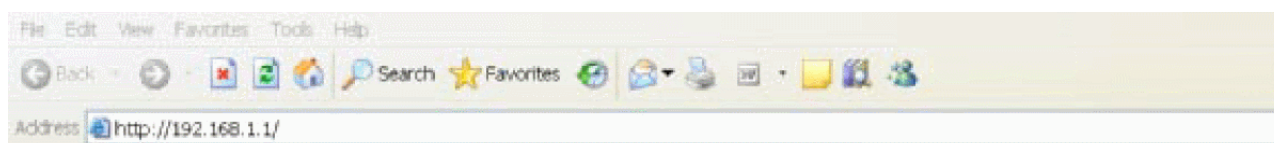
The AT-GS950/8 switch is shipped with a pre-assigned IP address of 192.168.1.1.

After your initial login, you may want to assign a new IP address to your switch. To manually assign an IP address to the switch, refer to “Configuring an IP Address, Subnet Mask and Gateway Address” on page 10. To configure the switch to obtain its IP configuration from a DHCP server, refer to “Enabling and Disabling the DHCP Client” on page 14.

Whether you use the pre-assigned IP address or assign a new one, you must set your local PC to the same subnet as the switch.

To start a web browser management session, do the following procedure:

1. Start your web browser.
2. In the URL field of the browser, enter 192.168.1.1 which is the default IP address of the switch. See Figure 1.



Switch's IP Address

Figure 1. Entering a Switch's IP Address in the URL Field

The AT-S107 Management Software displays the login dialog box, shown in Figure 2.

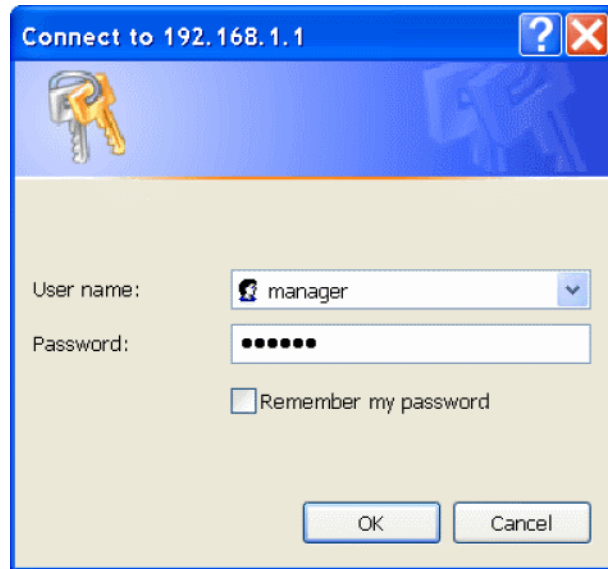


Figure 2. Management Login Dialog Box

3. Enter the AT-S107 management login user name and password.

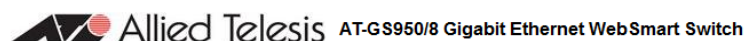
The default user name is "manager" and the default password is "friend."

4. Press OK.

The login name and password are case-sensitive.

The switch Home Page is displayed. See Figure 3 on page 6 for an example of the AT-S107 Home Page.

To change the user name and password, refer to "Configuring System Administration Information" on page 19.



AT-GS950/8

- Switch Info
- Front Panel
- System
- Physical Interface
- Bridge
- SNMP
- Access Control Config
- RMON
- Voice VLAN
- Security
- DHCP Snooping
- LLDP
- Statistic Chart
- Tools
- Save Configuration to Flash

### Switch Information

System Up For: 0 day(s), 0 hr(s), 4 min(s), 8 sec(s)

Runtime Image: AT-S107 V1.1.0 [1.00.043]

Boot Loader: 1.00.005

#### Hardware Information

- Version: A1
- DRAM Size: 64 M
- Flash Size: 16 M

#### Administration Information

- System Name:
- System Location:
- System Contact:

#### System MAC Address, IP Address, Subnet Mask and Gateway

- MAC Address: 00:00:01:03:00:20
- IP Address: 10.4.17.92
- Subnet Mask: 255.255.252.0
- Default Gateway: 10.4.16.1

#### Automatic Network Features

- DHCP Client Mode: Enable
- BOOTP Client Mode: Disable

Figure 3. AT-S107 Home Page

The main menu appears on the left side and is common for all of the management pages discussed in this manual. It consists of the following folders and web pages:

- ☐ Switch Info.
- ☐ Front Panel
- ☐ System
- ☐ Physical Interface
- ☐ Bridge
- ☐ SNMP
- ☐ Access Control
- ☐ RMON
- ☐ Voice VLAN
- ☐ Security
- ☐ LLDP
- ☐ Statistics Chart
- ☐ Tools
- ☐ Save Configuration

- To see the front panel of the switch, select **Front Panel** from the main menu on the left side of the page.

The AT-S107 Management software displays the front of the switch. Ports that have a link to an end node are green. Ports without a link are grey. The AT-GS950/8 switch front panel page is shown in Figure 4.

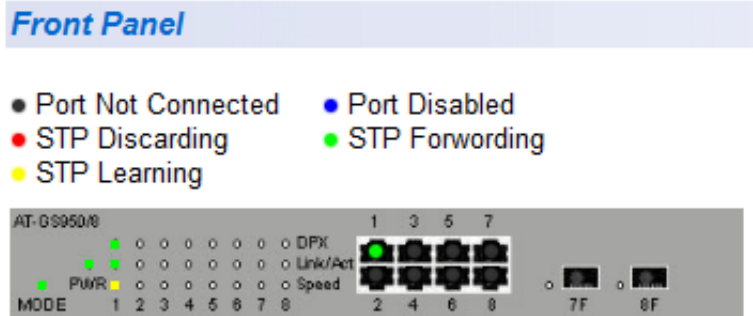


Figure 4. AT-GS950/8 Front Panel Page

A web browser management session remains active even if you link to other sites. You can return to the management web pages anytime as long as you do not quit the browser.

## Web Browser Tools

---

You can use the web browser tools to move around the management pages. Selecting **Back** on your browser's toolbar returns you to the previous display. You can also use the browser's **bookmark** feature to save the link to the switch.



## Configuration of IP Address, Subnet Mask and Gateway Address

This procedure explains how to change the IP address, subnet mask, and gateway address of the switch. Before performing the procedure, note the following:

- ❑ A gateway address is only required if you want to remotely manage the device from a management station that is separated from the switch by a router.
- ❑ To configure the switch to automatically obtain its IP configuration from a DHCP server on your network, go to “DHCP Client Configuration” on page 18.

To change the switch’s IP configuration, perform the following procedure:

1. From the main menu on the left side of the page, click the **System** folder.  
The **System** folder expands.
2. From the **System** folder, select **IP Setup**.  
The IP Setup Page is displayed. See Figure 5.

**IP Setup**

System MAC Address: 00:01:02:03:04:05

System IP Address: 192 . 168 . 1 . 1

System Subnet Mask: 255 . 255 . 255 . 0

System Default Gateway: 0 . 0 . 0 . 0

DHCP Mode: Disable ▾

Apply

Figure 5. IP Setup Page

3. Change the IP configuration parameters by observing or entering new information in the following fields:

**System MAC Address** - This parameter displays the MAC address of the switch. You cannot change this parameter.

**System IP Address** - Displays the current IP address of the switch. To change the IP address, enter a new IP address. When DHCP is enabled, you cannot change this parameter.

**System Subnet Mask** - Displays the current subnet mask of the switch. To change the subnet mask, enter a new subnet mask. When DHCP is enabled, you cannot change this parameter.

**System Default Gateway** - Displays the default gateway of the switch. To change the default gateway, enter a new gateway. When DHCP is enabled, you cannot change this parameter.

**DHCP Mode** - For information about setting this parameter, refer to “DHCP Client Configuration” on page 18.

4. Click **Apply**.

---

**Note**

Changing the IP address ends your management session. To resume managing the device, enter the new IP address of the switch in the web browser’s URL field, as shown in Figure 1 on page 4.

---

5. After you log on to the switch with the new IP address, select **Save Configuration to Flash** from the main menu on the left side of the page to save the new IP address to memory.



---

**Caution**

If you do not select **Save Configuration to Flash**, the IP address will revert to its original setting when you power cycle or reboot the switch.

---

## IP Access List Configuration

When the IP Access List feature is enabled, remote access to the AT-S107 management software is restricted to the IP addresses entered into the IP Access List.

The procedures in this section describe how to enable or disable the IP Access List feature and how to add or remove IP addresses from the list. See the following sections:

- ❑ “Create an IP Access List” on page 11
- ❑ “Delete an IP Address List Entry” on page 13

### Note

To modify IP address that has already been created, it must first be deleted and then re-created using the following procedures.

### Create an IP Access List

To create a list of accessible IP addresses, perform the following procedure:

1. From the main menu on the left side of the page, click the **System** folder.  
The **System** folder expands.
2. From the **System** folder, select **IP Access List**. The IP Access List Page is displayed. See Figure 6.

**IP Access List**

IP Restriction Status: Disable ▾ Apply

---

IP Address :  .  .  .  Add

Index	Accessible IP	Action
<< IP List is empty >>		

Figure 6. IP Access List Page

3. Enter an IP address in the **IP Address** field using a xxx.xxx.xxx.xxx format.
4. Click **Add**.  
The IP address is added to the IP Access List table in the **Accessible IP** column.

---

**Note**

You can add up to 10 IP address to the IP Access List table.

---

5. From the **IP Restriction Status** field, select one of the following choices from the pull-down menu:

**Enable** - This selection restricts the access to the AT-S107 management software to the IP addresses in the table listed under **Accessible IP**.

**Disable** - This selection allows unrestricted access to the AT-S107 management software.

6. Click **Apply**.  
Access to the management software is now restricted to those IP addresses listed in the IP Access List table.
7. From the main menu on the left side of the page, select **Save Configuration to Flash** to permanently save your changes.

### **Delete an IP Address List Entry**

To delete an IP address from the IP Access List, perform the following procedure:

1. From the main menu on the left side of the page, click the **System** folder.  
The **System** folder expands.
2. From the **System** folder, select **IP Access List**.  
The IP Access List Page is displayed. See Figure 6 on page 11.
3. Select **Delete** next to the IP address that you want to remove.  
The IP address is removed from the IP Access List table. If you remove the last IP address from the table, the **IP Restriction Status** field is set to Disable.
4. From the main menu on the left side of the page, select **Save Configuration to Flash** to permanently save your changes.

## System Time

The procedures in this section describe how to configure the system time by manually entering the time or through SNTP and how to configure the daylight savings time feature. See the following sections:

- ❑ “Manually Setting System Time” on page 14
- ❑ “Setting SNTP” on page 15
- ❑ “Setting Daylight Savings Parameters” on page 16

### Manually Setting System Time

To set the system time manually, perform the following procedure:

1. From the main menu on the left side of the page, click the **System** folder.  
The **System** folder expands.
2. From the **System** folder, select **System Time**.  
The System Time Page is displayed. See Figure 7.

**System Time**

Clock Mode :

Local Time

Current Time :

1 Jan 2009 11:57:32

Time Zone :

**Date/Time Settings**

Clock Mode:

Local Time ▾

**Local Time Settings**

Date Setting(YYYY:MM:DD):

2009 / 1 / 1

Time Setting(HH:MM:SS):

11 : 57 : 32

**Simple Network Time Protocol (SNTP) Settings**

SNTP Primary Server :

0 . 0 . 0 . 0

SNTP Secondary Server :

0 . 0 . 0 . 0

SNTP Poll Interval :

1 Min.(1-60)

Time Zone :

▾

**Additional Time Parameters**

Daylight Saving Time Status

Disabled ▾

From (Month:Day:HH:MM)

January ▾ : 01 ▾ : 00 ▾ : 00 ▾

To (Month:Day:HH:MM)

January ▾ : 01 ▾ : 00 ▾ : 00 ▾

DST Offset

1 hr ▾

Apply

Figure 7. System Time Page

3. Use the pull down menu to set the **Clock Mode** parameter to **Local** time.
4. In the Local Time Settings section, set the **Date Setting (YYYY:MM:DD)** to the current date in the YYYY:MM:DD format.
5. In the Local Time Settings section, set the **Time Settings (HH:MM:SS)** to the current time in the HH:MM:SS format.
6. Click the **Apply** button at the bottom of the page.  
The time will take effect immediately.
7. Save your new settings or any changes to the configuration file by selecting **Save Configuration to Flash** from the main menu on the left side of the page.

## Setting SNTP

To configure SNTP, perform the following procedure:

1. From the main menu on the left side of the page, click the **System** folder.  
The **System** folder expands.
2. From the **System** folder, select **System Time**.  
The System Time Page is displayed. See Figure 7 on page 14.
3. Use the pull down menu to set the **Clock Mode** parameter to **SNTP**.
4. Enter the IP address of the **SNTP Primary Server**. The format is xxx.xxx.xxx.xxx.
5. Enter the IP address of the **SNTP Secondary Server**. The format is xxx.xxx.xxx.xxx.
6. Enter the **SNTP Poll Interval**. The range is 1 - 60 minutes.
7. Enter the local **Time Zone** from the pull down menu.
8. Click the **Apply** button at the bottom of the page.  
The switch will immediately start polling the SNTP primary server for time information.
9. Save your new settings or any changes to the configuration file by selecting **Save Configuration to Flash** from the main menu on the left side of the page.

## Setting Daylight Savings Parameters

If you want to configure the switch for daylight savings time, perform the following procedure:

1. From the main menu on the left side of the page, click the **System** folder.  
The **System** folder expands.
2. From the **System** folder, select System Time.  
The System Time Page is displayed. See Figure 7 on page 14.
3. In the **Daylight Savings Time Status** field, select **Enabled**.
4. Specify the Month, Day, Hour and Minute when Daylight Savings will take effect in the **From** time fields.
5. Specify the Month, Day, Hour and Minute when Daylight Savings will end in the **To** time fields.
6. Using the pull down menu, specify the Daylight Savings offset in the **DST Offset** field. You can select either 1 hr or 1/2 hr.
7. Save your new settings or any changes to the configuration file by selecting **Save Configuration to Flash** from the main menu on the left side of the page.



## DHCP and ATI Web Discovery Tool

---

The AT-GS950/8 Gigabit Ethernet Smart switch is managed through a web browser interface only. The factory default IP address is 192.168.1.1.

The switch does not have a local console connector, which means that you cannot learn what the switch's management IP address is on a web browser without first knowing what the address is. Once the IP address is known, you can enter it in the browser.

When the DHCP feature is enabled, a DHCP server automatically assigns an IP address which is not advertised over the network. As a consequence, you do not know what IP address has been assigned to the switch.

---

**Note**

The new IP address assignment from the DHCP server may take one to two minutes before the process is completed.

---

Fortunately, there is an ATI Web Discovery Tool available that resolves this issue. It detects the MAC address, IP address and other information of the AT-GS950 series switches that are present on your local area network.

---

**Note**

The ATI Web Discovery Tool is available for download on the AT-GS950/8 product page at [alliedtelesis.com](http://alliedtelesis.com).

---

## DHCP Client Configuration

---

This procedure explains how to activate and deactivate the DHCP client on the AT-GS950/8 switch. When the client is activated, the switch obtains its IP configuration including an IP address and subnet mask from a DHCP server on your network. Before performing the procedure, note the following:

- ❑ By default, the DHCP client is disabled on the switch.
- ❑ The DHCP client supports DHCP Auto Configuration Settings or BOOTP. See “DHCP Auto Configuration” on page 20 for more information.
- ❑ After you enable DHCP, your current management session ends because a different IP address is assigned to the switch by the DHCP server. The new IP address can be discovered using the ATI Discovery Tool. See “DHCP and ATI Web Discovery Tool” on page 17 for more information.

To activate or deactivate the DHCP client on the switch, perform the following procedure:

1. From the main menu on the left side of the page, click the **System** folder.  
The **System** folder expands.
2. From the **System** folder, select **IP Setup**.  
The IP Setup Page is shown in Figure 5 on page 9.
3. From the pull-down menu next to the **DHCP Mode** field, select **Enable** or **Disable**.
4. Click **Apply**.  
When the DHCP client is **Enabled**, the web server connection to the switch is lost because a different IP address is assigned to the switch by the DHCP server.



### Caution

Enabling DHCP may end your current management session.

---

5. Use the ATI Web Discovery Tool to find the new IP address assigned to the switch by the DHCP server. See “DHCP and ATI Web Discovery Tool” on page 17 for more information.

---

**Note**

The ATI Web Discovery Tool is available for download on the AT-GS950/8 product page at [alliedtelesis.com](http://alliedtelesis.com).

---

6. Follow the procedure to log on with the new IP address provided by the DHCP Server as described in “Establishing a Remote Connection to the Web Browser Interface” on page 4.
7. Save your new settings or any changes to the configuration file by selecting **Save Configuration to Flash** from the main menu on the left side of the page.

If you do not save the new configuration when DHCP is enabled, the software reverts to the previously saved IP address value when the switch is power cycled or rebooted. If no IP address has been previously saved, the IP address value reverts to 192.168.1.1.

If you enable DHCP and then save your configuration, you are saving the DHCP setting (**Enabled**). The next time the switch boots up, it will use the DHCP process to establish the IP address used to manage the AT-GS950/8 switch.

If you enter a new IP address after disabling DHCP and save your configuration, the DHCP setting (**Disabled**) and the new IP address on the switch is saved. The next time the switch boots up, it will respond to the IP address that you entered when you re-establish contact with the AT-S107 Management software.

## DHCP Auto Configuration

---

If you need to automatically update the switch's configuration files via a remote server, the DHCP Auto Configuration feature is available for this purpose via the DHCP server.

---

**Note**

You must enable the DHCP client so that this feature can operate with the DHCP server. See "DHCP Client Configuration" on page 18 for more information.

---

To configure this feature on the switch, perform the following procedure:

1. From the main menu on the left side of the page, click the **System** folder.  
The **System** folder expands.
2. From the **System** folder, select **System**.  
The DHCP Auto Configuration Settings Page is shown in Figure 8.



Figure 8. DHCP Auto Configuration Settings Page

3. From the **Auto Configuration State** field, select one of the following choices from the pull-down menu:

**Enable** - The DHCP Auto Configuration feature is active.

---

**Note**

You must enable the DHCP client so that this feature can operate with the DHCP server. See "DHCP Client Configuration" on page 18 for more information.

---

**Disable** - The DHCP Auto Configuration feature is inactive.

4. Click **Apply**.  
The DHCP Auto Configuration setting that you have selected is now active.
5. From the main menu on the left side of the page, select **Save Configuration to Flash** to permanently save your changes.

## System Management Information

---

This section explains how to assign a name, location, and contact information for the AT-GS950/8 switch. This information helps in identifying each specific AT-GS950/8 switch among other switches in the same local area network. Entering this information is optional.

---

### Note

Allied Telesis recommends that you assign a name to the switch. Naming each switch can help you identify the specific switch you want to manage among others. It can also help to avoid performing a configuration procedure on the wrong switch.

---

To set a switch's administration information, perform the following procedure:

1. From the main menu on the left side of the page, click the **System** folder.  
The **System** folder expands.
2. From the **System** folder, select **Management**.  
The Management Page is displayed. See Figure 9 for the AT-GS950/8 Management Page.

### Management

System Description:	AT-GS950/8
System Object ID:	1.3.6.1.4.1.207.1.4.165
System Name:	<input type="text"/>
System Location:	<input type="text"/>
System Contact:	<input type="text"/>
	<input type="button" value="Apply"/>

Figure 9. AT-GS950/8 Management Page

3. Configure the following parameters as necessary:

**System Description** - Specifies the Allied Telesis switch model. You cannot change this parameter.

**System Object ID** - Indicates the unique SNMP MIB object identifier that identifies the switch model. You cannot change this parameter.

**System Name** - Specifies a name for the switch, for example, Sales. The name is optional and may contain up to 15 characters.

**System Location** - Specifies the location of the switch. The location is optional and may contain up to 30 characters.

**System Contact** - Specifies the name of the network administrator responsible for managing the switch. This contact name is optional and may contain up to 30 characters.

4. Click **Apply**.
5. From the main menu on the left side of the page, click on **Switch Info**. The Switch Information page is displayed. See “AT-S107 Home Page” on page 6 for more information.
6. From the main menu on the left side of the page, select **Save Configuration to Flash** to permanently save your changes.

## User Name and Password Configuration

Password protection is always enabled for access to the AT-S107 Management software. This section explains how to create new users names and passwords and how to modify or delete existing users for the web interface. See the following sections:

- ❑ “Add New User Name and Password” on page 23
- ❑ “Modify User Name and Password” on page 24
- ❑ “Delete User Name and Password” on page 25

### Add New User Name and Password

The default User Name and Password is “manager” and “friend” - both without the quotes. To configure new User Name and Password information, perform the following procedure:

1. From the main menu on the left side of the page, click the **System** folder.  
The **System** folder expands.
2. From the **System** folder, select **Administration**.  
The Administration Page is displayed. See Figure 10.

The screenshot shows the 'Administration' page with the following elements:

- Administration** (Section Header)
- User Name:** [Text Input] (Maximum length is 12)
- Password:** [Text Input] (Maximum length is 12)
- Confirm Password:** [Text Input]
- | Index | Username | Password | Action                 |
|-------|----------|----------|------------------------|
| 1     | manager  | *****    | <a href="#">Modify</a> |

Figure 10. Administration Page

3. To create a user name, enter a user name in the box next to the **User Name** field.

You can enter a value of up to 12 alphanumeric characters. The **User Name** field is case sensitive.

4. To add a password that corresponds to the user name entered in step 3, enter a password of up to 12 alphanumeric characters in the box next to the **Password** field. The **Password** field is case sensitive.
5. To confirm the password entry, retype the password in the box next to the **Confirm Password** field.
6. Click **Add** to activate your changes on the switch.
7. From the main menu on the left side of the page, select **Save Configuration to Flash** to permanently save your changes.

## Modify User Name and Password

To modify the a user name password, perform the following procedure:

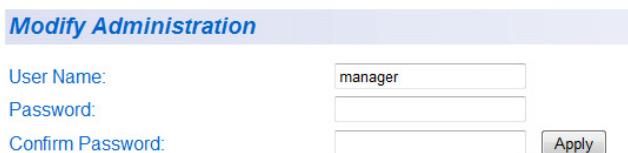
1. From the main menu on the left side of the page, click the **System** folder.  
The **System** folder expands.
2. From the **System** folder, select **Administration**.  
The Administration Page is shown in Figure 10 on page 23.
3. Identify the user name that you want to change and click **Modify** in the **Action** column.  
The Modify Administration Page is displayed. See Figure 11.

---

### Note

The default user name cannot be modified or deleted. The default password can be modified.

---



The screenshot shows a web interface titled "Modify Administration" in a blue header bar. Below the header, there are three labels on the left: "User Name:", "Password:", and "Confirm Password:". To the right of each label is a text input field. The "User Name" field contains the text "manager". To the right of the "Confirm Password" field is a button labeled "Apply".

Figure 11. Modify Administration Page

4. To change a password, enter a password of up to 12 alphanumeric characters in the box next to the **Password** field.
5. To confirm the above password, retype the password in the box next to the **Confirm Password** field.
6. Click **Apply** to activate your changes on the switch.
7. From the main menu on the left side of the page, select **Save Configuration to Flash** to permanently save your changes.



## Delete User Name and Password

To delete a user name that you have previously added, perform the following procedure.

1. From the main menu on the left side of the page, click the **System** folder.  
The **System** folder expands.
2. From the **System** folder, select **Administration**.  
The Administration Page is shown in Figure 10 on page 23.
3. Identify the user name that you want to delete and click **Delete**.  
The user name is removed from the Administration table.

---

### Note

The default user name cannot be modified or deleted. The default password can be modified.

---

4. From the main menu on the left side of the page, select **Save Configuration to Flash** to permanently save your changes.

## User Interface Configuration

---

This procedure explains how to enable and disable the user interfaces on the switch. With this procedure you can enable or disable the AT-GS950/8 SNMP Agent. For more information about SNMP, see the AT-GS950 Web User Guide.

The **Web Server Status** is displayed as **Enabled** for your information only. The Web Server cannot be disabled.

### SNMP Interface

To enable or disable the AT-GS950/8 SNMP interface, perform the following procedure:

1. From the main menu on the left side of the page, click the **System** folder.  
The **System** folder expands.
2. From the **System** folder, select **User Interface**.  
The User Interface Page is displayed. See Figure 12.

Figure 12. User Interface Page

3. Choose **Enable** or **Disable** from the pull down list for the **SNMP Agent** parameter.

**Enabled** - When you enable this parameter, the SNMP agent is active. You can manage the AT-GS950/8 switch with Network Management Software and the switch's private MIB.

**Disabled** - When you enable this parameter, the SNMP agent is inactive.

---

#### Note

For more information about SNMP, see the AT-GS950 Web User Guide.

---

4. Click **Apply** located under the **Web Server Status** Enable/Disable field.

5. From the main menu on the left side of the page, select **Save Configuration to Flash** to permanently save your changes.

## **User Interface Timeout**

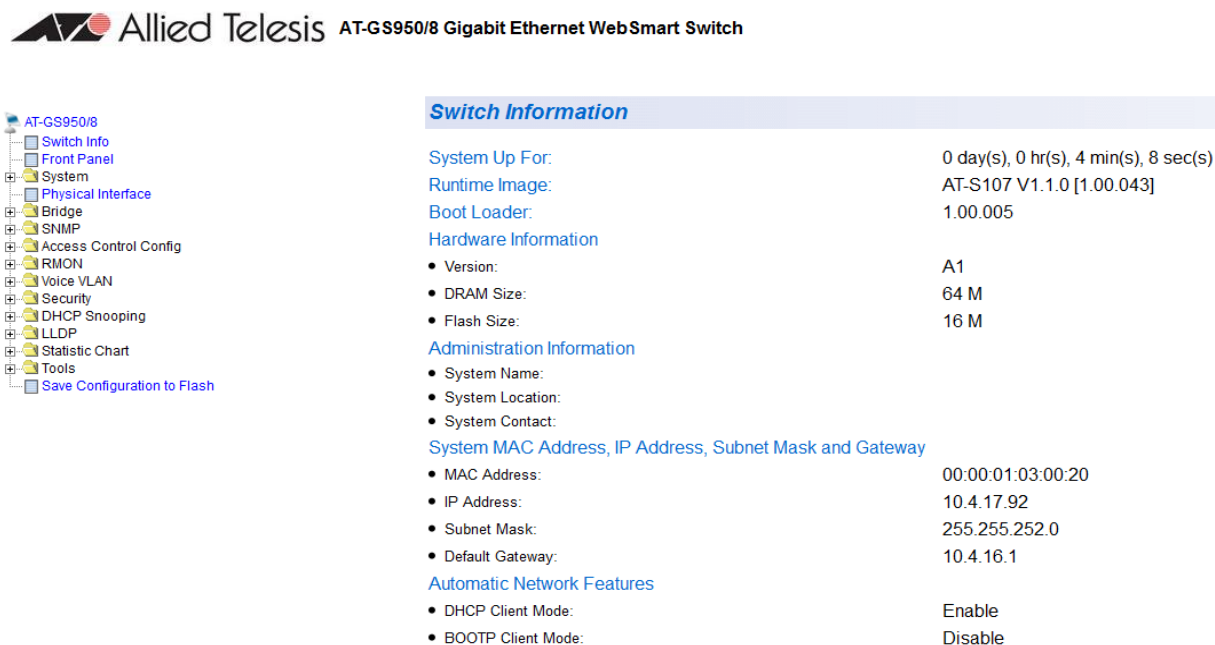
To set the Web Idle Timeout, perform the following procedure:

1. From the main menu on the left side of the page, click the **System** folder.  
The **System** folder expands.
2. From the **System** folder, select **User Interface**.  
The User Interface Page is displayed. See Figure 12 on page 26.
3. Refer to the bottom portion of the web page. Enter the **Web Idle Timeout** parameter. The range is from 3 to 60 minutes.
4. From the main menu on the left side of the page, select **Save Configuration to Flash** to permanently save your changes.

## System Information Display

The Switch Information page is initially displayed when you first log into the AT-GS950/8 switch. It provides general information about the switch. To view this information, perform the following procedure:

1. From the main menu on the left side of the page, select **Switch Info**. The Switch Information Page is displayed. See Figure 13.



**Switch Information**

System Up For:	0 day(s), 0 hr(s), 4 min(s), 8 sec(s)
Runtime Image:	AT-S107 V1.1.0 [1.00.043]
Boot Loader:	1.00.005
<b>Hardware Information</b>	
• Version:	A1
• DRAM Size:	64 M
• Flash Size:	16 M
<b>Administration Information</b>	
• System Name:	
• System Location:	
• System Contact:	
<b>System MAC Address, IP Address, Subnet Mask and Gateway</b>	
• MAC Address:	00:00:01:03:00:20
• IP Address:	10.4.17.92
• Subnet Mask:	255.255.252.0
• Default Gateway:	10.4.16.1
<b>Automatic Network Features</b>	
• DHCP Client Mode:	Enable
• BOOTP Client Mode:	Disable

Figure 13. AT-GS950/8 Switch Information Page

The Switch Information Page displays the following information:

**System Up For** - The number of days, hours, and minutes that the switch has been running since it was last rebooted.

**Runtime Image** - The version number of the runtime firmware.

**Boot Loader** - The version number of the bootloader firmware.

Hardware Information Section:

**Version** - The hardware version number.

**DRAM Size** - The size of the DRAM, in megabytes.

**Flash Size** - The size of the flash memory, in megabytes.

#### Administration Information Section:

**Switch Name** - This parameter displays the name assigned to the switch. To assign the switch a name, refer to “System Management Information” on page 21.

**Switch Location** - This parameter displays the location of the switch. To assign the location, refer to “System Management Information” on page 21.

**Switch Contact** - This parameter displays the contact person responsible for managing the switch. To assign the name of a contact, refer to “System Management Information” on page 21.

#### System MAC Address, IP Address, Subnet Mask, and Gateway Section:

**MAC Address** - This parameter displays the MAC address of the switch.

**IP Address** - This parameter displays the system IP address. Refer to “Configuration of IP Address, Subnet Mask and Gateway Address” on page 9 to manually assign an IP address or “DHCP Client Configuration” on page 18 to activate the DHCP client.

**Subnet Mask** - This parameter displays the subnet mask for the switch. Refer to “Configuration of IP Address, Subnet Mask and Gateway Address” on page 9 to manually assign a subnet mask or “DHCP Client Configuration” on page 18 to activate the DHCP client.

**Default Gateway** - This parameter displays the default gateway IP address. Refer to “Configuration of IP Address, Subnet Mask and Gateway Address” on page 9 to manually assign a gateway address or “DHCP Client Configuration” on page 18 to activate the DHCP client.

#### Automatic Network Features Section:

**DHCP Mode** - This parameter displays the status of the DHCP client on the switch. For information about setting this parameter, refer to “DHCP Client Configuration” on page 18.

## Switch Reboot

---

You can reboot the AT-GS950/8 switch by either pressing the front panel eco-friendly switch between 5 to 9 seconds or by using the **Normal** reboot function provided in the AT-S107 management software.

In addition to rebooting the switch, you have the option to reset the AT-GS950/8 switch configuration parameters to the original factory default settings. There are two ways to accomplish this:

- ☐ Press the front panel ecofriendly button for more than 10 seconds and release it.
- ☐ Reboot the switch in the AT-S107 management software and follow the procedures to reset to factory defaults. See “Switch Reboot” on page 31 and “Configure Factory Default Values” on page 32 for more information.

---

### Note

Refer to the AT-GS950 Installation guide for more information about how to use the eco-friendly button to reboot or reset the switch.

---

---

### Note

The AT-S107 Management software default values are listed in the AT-GS950 Web User Guide.

---

## Password Protection of Factory Reset

If your switch is located in a controlled environment such as a locked switching closet or limited access equipment room, it may be desirable to have the ability to easily reset the switch to factory defaults at any time by using either the front panel ecofriendly switch or the AT-S107 management software.

However, if your switch is installed in an uncontrolled environment, you may want to protect the switch's configuration from unwanted or accidental resets. The AT-S107 management software allows you to disable the factory default reset feature and lock it with your own password. When this is done, two areas are affected:

- ☐ The reset and factory default reset features on the front panel ecofriendly switch are disabled.
- ☐ The factory default reset feature in the AT-S107 management software is disabled. However, you can still reset the switch via the management software without affecting the switch's configuration.

The factory default reset can be enabled again by using the password that you initially defined when disabling this function.



---

**Caution**

Since you define this password as part of the process of disabling this function, Allied Telesis has no knowledge of it. You are responsible for keeping the password in a safe place. If it is lost, Allied Telesis does not have a way to help you recover it.

---

See “Disabling Factory Default Reset Feature” on page 34 for information about how to disable the factory default reset feature.

## Switch Reboot

The following procedure outlines how to reboot your AT-GS950/8 switch.



---

**Caution**

This procedure reboots the switch and reloads the AT-S107 Management software configuration from flash memory. Insure that your current configuration is saved before rebooting the switch by selecting **Save Configuration to Flash** from the main menu on the left side of the page to permanently save your changes.

All configuration parameters that have not been previously saved are lost. After the switch is reboots, they are reset to the values stored in the flash memory.

---



---

**Caution**

This procedure causes the switch to reboot. The switch does not forward network traffic during the reboot process. Some network traffic may be lost.

---

1. From the main menu on the left side of the page, select the **Tools** folder.  
The **Tools** folder expands.
2. From the **Tools** folder, select **Reboot**.  
The Factory Default Reset/Reboot Page is displayed. See Figure 14.

**Factory Default Reset**

Factory Default Reset: Enable ▾

**Reboot**

Reboot Type: Normal ▾

Apply

Note: System will reset in a few seconds after pressing Apply button.

Figure 14. Factory Default Reset/Reboot Page

3. Go to the lower part of the page to the Reboot section.
4. In the **Reboot Type** field, select **Normal** from the pull-down menu. When the switch is rebooted with this selection, all configuration parameters that are saved in flash memory are loaded into the switch's active memory.

---

**Note**

Two additional options are available in the **Reboot Type** field. The procedures for these options are described in "Configure Factory Default Values".

---

5. Click **Apply**.  
The switch immediately begins to reload the AT-S107 Management software and configuration parameters. This process takes approximately two minutes to complete. You can not manage the device during the reboot. After the reboot is finished, you can log in again if you want to continue to manage the switch.

## Configure Factory Default Values

This procedure returns all AT-S107 Management software parameters to their factory default values and deletes all tagged and port-based VLANs on the switch.

---

**Note**

The AT-S107 Management software default values are listed in the AT-GS950 Web User Guide..

---



**Caution**

This procedure causes the switch to reboot. The switch does not forward network traffic during the reboot process. Some network traffic may be lost.

To return the AT-S107 Management software to the default settings, perform the following procedure:

**Note**

The AT-S107 Management software default values are listed in the AT-GS950 Web User Guide.

1. From the main menu on the left side of the page, select the **Tools** folder.  
The **Tools** folder expands.
2. From the **Tools** folder, select **Reboot**.  
The Reboot Page is displayed. See Figure 14 on page 32.
3. Go to the lower part of the page to the Reboot section.
4. In the **Reboot Type** field, use the pull-down menu to select one of the following options:

**Normal** - This setting reloads all configuration parameters that are saved in flash memory. See “Switch Reboot” on page 31 for more information when using this selection.

**Factory Default** - Resets all switch parameters to the factory default settings, including the IP address, subnet mask, and gateway address.

**Caution**

This setting will cause the IP address to be reset to 192.168.1.1. You will lose connectivity with the switch management software after the reboot is completed and you can login again with this IP address.

**Factory Default Except IP Address** - Resets all switch parameters to the factory default settings, but retains the current IP address, subnet mask, and gateway settings saved in flash memory. If the DHCP client is enabled, it remains enabled after this reset and assignment of the IP address, subnet mask, and gateway settings are managed by the DHCP server.

5. Click **Apply**.

The switch begins the reboot process. You must wait approximately two minutes for the switch to complete the reboot process before you can re-establish your management session and network traffic begins flowing normally again.

## Disabling Factory Default Reset Feature

The factory default reset feature allows anyone to reset the switch to the factory default configuration. You may disable this feature. More details are available concerning “Password Protection of Factory Reset” on page 30.

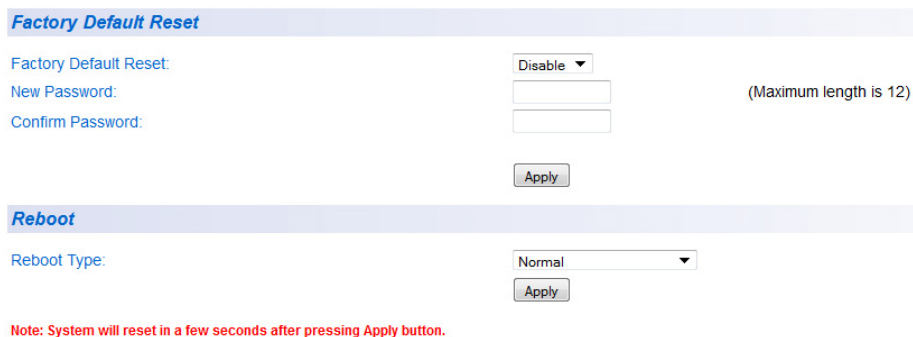
To disable the factory default reset feature, perform the following procedure:

1. From the main menu on the left side of the page, select the **Tools** folder.  
The **Tools** folder expands.
2. From the **Tools** folder, select **Reboot**.  
The Factory Default Reset/Reboot Page is displayed. See Figure 14 on page 32.
3. Go to the Factory Default Reset section on the upper part of the page. You will find a field called **Factory Default Reset**. This selection allows you to reset the switch configuration to the factory default settings by using the **Reboot** procedures outlined in “Configure Factory Default Values” on page 32.

### Note

The AT-S107 Management software default values are listed in the AT-GS950 Web User Guide.

4. To disable the factory default reset feature, select **Disable** on the pull-down menu of the **Factory Default Reset** field.  
The Factory Default Reset/Reboot Page changes to include fields for entering a password. See Figure 15.



**Factory Default Reset**

Factory Default Reset: Disable ▾

New Password:  (Maximum length is 12)

Confirm Password:

---

**Reboot**

Reboot Type: Normal ▾

**Note:** System will reset in a few seconds after pressing Apply button.

Figure 15. Factory Default Reset/Reboot Page with Password Entry

5. In the **New Password** field, enter a password of up to 12 characters in length. It is case-sensitive. There is not a default password for this field.

**Caution**

Since you define this password as part of the process of disabling this function, Allied Telesis has no knowledge of it. You are responsible for keeping the password in a safe place. If it is lost, Allied Telesis does not have a way to help you recover it.

6. Re-enter the same password in the **Confirm Password** field.
7. Click **Apply**.  
The following message is displayed:

*By clicking on Accept, the Factory Default Reset function will be Disabled on both the switch management software and the physical front panel ecoFriendly button. If you loose this password, ATI cannot recover it for you.*

*By Clicking on Cancel, the "Factory Default Reset" function will remain Enabled on both the switch management software and the physical front panel ecoFriendly button.*

8. Click **Accept** on the message.  
The Factory Default Reset page changes and displays the Factory Default Reset feature as **Disabled**. See Figure 16.

**Factory Default Reset**

Factory Default Reset: Disable ▼

**Reboot**

Reboot Type: Normal ▼

Apply

**Note:** System will reset in a few seconds after pressing Apply button.

Figure 16. Factory Default Reset Disabled Page

9. From the main menu on the left side of the page, select **Save Configuration to Flash** to permanently save your changes.

## Enabling Factory Default Reset

If the Factory Default Reset feature is disabled and you choose to **Enable** it, perform the following procedure:

1. From the main menu on the left side of the page, select the **Tools** folder.  
The **Tools** folder expands.
2. From the **Tools** folder, select **Reboot**.  
The Factory Default Reset/Reboot Page is displayed. See Figure 16.
3. Go to the Factory Default Reset section on the upper part of the page.  
The **Factory Default Reset** field should be set to **Disable**.

### Note

If the **Factory Default Reset** field is already set to **Enable**, you do not need to continue with this procedure.

4. To enable the factory default reset feature, select **Enable** on the pull-down menu of the **Factory Default Reset** field.  
The Factory Default Reset/Reboot Page changes to include a **Password** field for entering a password. See Figure 17 on page 36.

**Factory Default Reset**

Factory Default Reset: Enable ▾

Password:  (Maximum length is 12)

Note: Enter P/W and click "Apply" to enable "Factory Default Reset" feature

Apply

**Reboot**

Reboot Type: Normal ▾

Apply

Note: System will reset in a few seconds after pressing Apply button.

Figure 17. Factory Default Reset/Reboot Page with Password Entry

5. Enter the same password that you defined when you previously set the **Factory Default Reset** field to **Disable**.
6. Click **Apply**.  
The initial Factory Default Reset/Reboot Page is displayed with the **Factory Default Reset** field **Enabled**. See Figure 14 on page 32.  
In the Reboot section, the **Reboot Type** field now includes the options presented in its pull down menu for returning the switch configuration to the factory default values. See "Configure Factory Default Values" on page 32 for more information.
7. From the main menu on the left side of the page, select **Save Configuration to Flash** to permanently save your changes.

## Pinging a Remote System

This procedure instructs the AT-GS950/8 switch to ping a node on your network. This procedure is useful in determining whether an active link exists between the switch and another network device.

### Note

The device you are pinging must be a member of the Default VLAN and within the same local area network as your switch. In other words, the port on the switch through which the node is communicating with the switch must be an untagged or tagged member of the Default VLAN.

To ping a network device, perform the following procedure:

1. From the main menu on the left side of the page, select the **Tools** folder.  
The **Tools** folder expands.
2. From the **Tools** folder, select **Ping**.  
The Ping Test Configuration Page is displayed. See Figure 18.

**Ping Test Configuration**

Destination IP Address:  .  .  .

Timeout Value:  Sec.(1-5)

Number of Ping Requests:  Times(1-10)

---

Figure 18. Ping Test Configuration Page

3. Configure the following parameters:

**Destination IP Address** - The IP address of the node you want to ping in the xxx.xxx.xxx.xxx format.

**Timeout Value** - Specifies the length of time, in seconds, the switch waits for a response before assuming that a ping has failed.

**Number of Ping Requests** - Specifies the number of ping requests you want the switch to perform.

4. Click **Start**.

5. To view the ping results, click **Show Ping Results**.  
A sample Ping Test Results Page is displayed. See Figure 19.

<i><b>Ping Test Result</b></i>	
<b>RESULT</b>	
Destination IP Address:	192.168.1.137
Pass:	100%
Average Time:	5 ms
<a href="#">Back to Ping Test</a>	

Figure 19. Ping Test Results Page

The following information is displayed:

**Destination IP Address** - Indicates the IP address of the unit that receives the ping.

**Pass** - Indicates the percentage of times the ping passed.

**Average Time** - Indicates the time, in milliseconds, the ping was received.

6. Click **Back to Ping Test** to return to the Ping Test Configuration Page.

## SSL Settings

---

The AT-GS950/8 switch has a web browser server for remote management of the unit with a web browser application from management workstations on your network. By default, the server operates in a non-secure HTTP mode and can be configured to communicate in a secure HTTPS mode with SSL protocol.

In many situations, the communication with the switch will be in a controlled environment and it is acceptable to communicate with the management software in the HTTP mode.

However, you may find that your management communications are subject to outside security risks and web sessions conducted in the non-secure HTTP mode are vulnerable to security issues because the packets are sent in clear text. Web browser management sessions that use the secure HTTPS mode with SSL protocol are protected against snooping because the packets exchanged between the switch and your management workstations are encrypted. When operating in this mode, only the AT-GS950/8 switch and the web browser are able to decipher the packets sent and received between them.

### Configuring SSL

To enable or disable the SSL protocol feature, perform the following procedure:

1. From the main menu on the left side of the page, click the **System** folder.  
The **System** folder expands.
2. From the **System** folder, select **SSL Settings**.  
The SSL Settings Page is displayed. See Figure 20.



Figure 20. SSL Settings Page

3. From the **SSL Settings** field, select one of the following choices from the pull-down menu:

**Enable** - The secure SSL mode is active. You must log in to the switch's management using the HTTPS mode on your browser.

**Disable** - The secure SSL mode is inactive. You must log in to the switch's management using the HTTP mode on your browser.

4. Click **Apply**.  
The SSL setting that you have selected is now active.
5. From the main menu on the left side of the page, select **Save Configuration to Flash** to permanently save your changes.



## System Log Configuration

---

The System log is designed to monitor the operation the AT-GS950/8 switch by recording the event messages it generates during normal operation. These events may provide vital information about system activity that can help in the identification and solutions of system problems.

To configure the System log, perform the following procedure:

1. From the main menu on the left side of the page, click the **System** folder.  
The **System** folder expands.
2. From the **System** folder, select **System Log Configuration**.  
The System Log Configuration Page is displayed. See Figure 21.

**System Log Configuration**

Syslog Status	Disable ▾
Time Stamp	Enable ▾
Messages Buffered Size (1~200)	50
Syslog Server IP	0.0.0.0
Facility	local0 ▾
Logging Level	info ▾

Apply

Clear Refresh

Figure 21. System Log Configuration Page

3. From the **Syslog Status** field, select one of the following choices from the pull-down menu:

**Enable** - The System log is active.

**Disable** - The System log is inactive.

4. From the Time Stamp field, select one of the following choices from the pull-down menu:

**Enable** - Each event message recorded in the log will have a time stamp recorded with it.

**Disable** - No time stamp will be recorded with the event messages.

5. Enter the **Messages Buffer Size**. The range is between 1 and 200.

6. Enter the **Syslog Server IP Address**. The format is xxx.xxx.xxx.xxx. If the address is left at the default setting of 0.0.0.0, no server is specified.

7. In the **Facility** field, enter the Facility local from the pull-down menu. The choices range from **local0** through **local7**.

8. Select the **Logging Level**. This parameter specifies what level of event messages will be logged into the System log. Your choices are as follows:

**0 Emergency** - The system is unusable.

**1 Alert** - Action must be taken immediately.

**2 Critical** - Critical conditions are displayed.

**3 Error** - Error conditions are displayed.

**4 Warning** - Warning conditions are displayed.

**5 Notice** - Normal but significant conditions are displayed.

**6 Informational** - Informational messages are displayed

**7 Debug** - Debug-level messages are displayed.

9. Click **Apply**.  
The System log is now active.

10. From the main menu on the left side of the page, select **Save Configuration to Flash** to permanently save your changes.

## Returning the AT-S107 Management Software to the Factory Default Values

---

This procedure returns all AT-S107 Management software parameters to their default values and deletes all tagged and port-based VLANs on the switch.

This procedure causes the switch to reboot. The switch does not forward network traffic during the reboot process. Some network traffic may be lost.

To return the AT-S107 Management software to the default settings, do the following procedure:

1. From the Tools folder, select **Reboot**.

The Reboot Page is shown in Figure 14 on page 32.

2. For the **Reboot Type** field, use the pull-down menu to select one of the following:

### **Factory Default**

Resets all switch parameters to the factory default settings, including the IP address, subnet mask, and gateway address.



### **Warning**

This setting will cause the IP address to be reset to 192.168.1.1. You will lose connectivity with the switch management software after the reboot is completed

### **Factory Default Except IP Address**

Resets all switch parameters to the factory default settings, but retains the IP address, subnet mask, and gateway settings. If the DHCP client is enabled, it remains enabled after this reset.

3. For the **Reboot Status** field, use the pull-down menu to select **Start** to begin the reboot.
4. Click **Apply**.

The switch is rebooted. You must wait for the switch to complete the reboot process before establishing your management session again.

## **Quitting a Web Browser Management Session**

---

To exit a web browser management session, close the web browser.